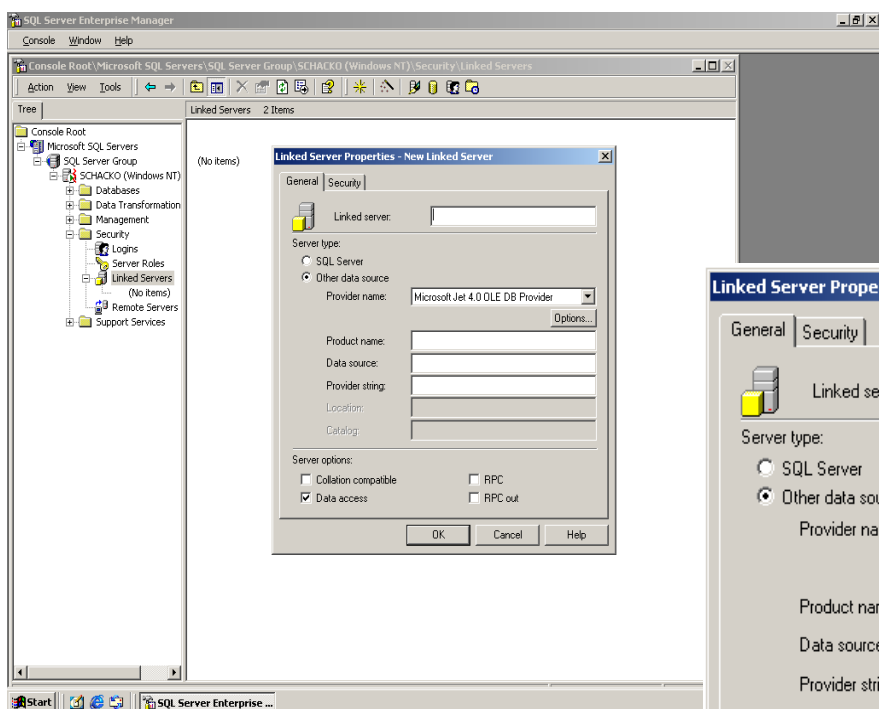
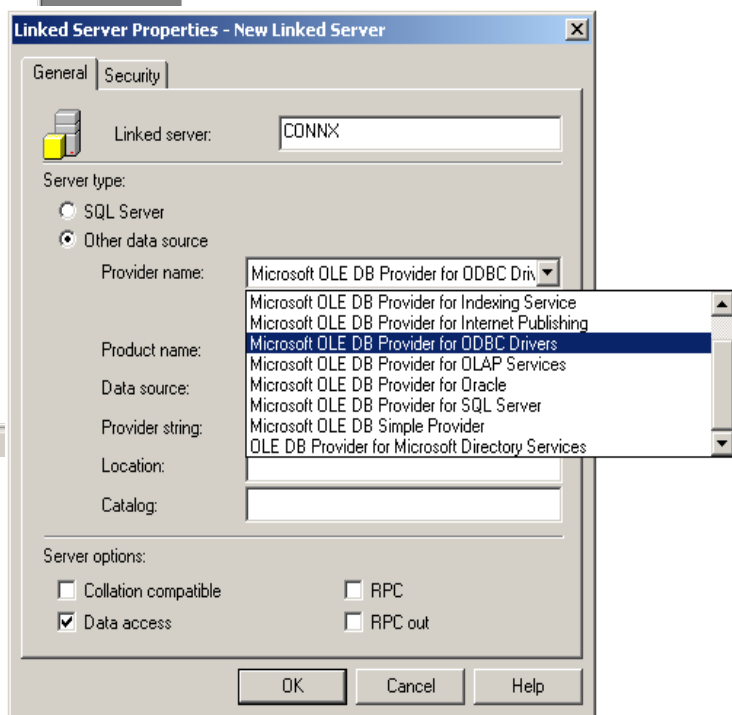


Use the Microsoft SQL Server Linked Servers utility to use SQL Server as a front end application and to gain live access to data stored in a CONNX Data Dictionary (CDD).

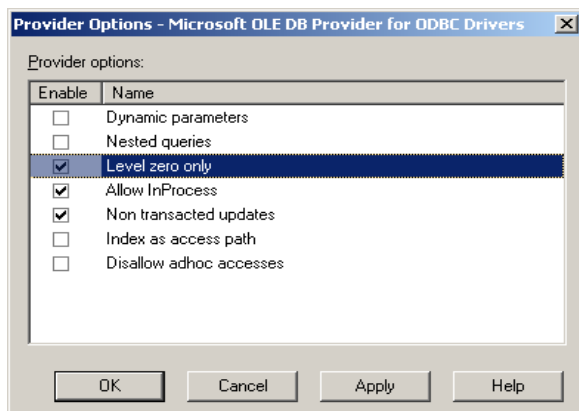
1. Open the **SQL Server Enterprise Manager**. Select a server under the **SQL Server Group**, and then expand the **Security** folder. Right-click **Linked Servers** and select **New Linked Server**. The **Linked Server Properties** dialog box appears.



2. Create a name for your new linked server in the **Linked Server** dialog box. Select the **Other Data Source** option, and then select **Microsoft OLE DB Providers for ODBC Drivers** from the **Provider Name** list box.



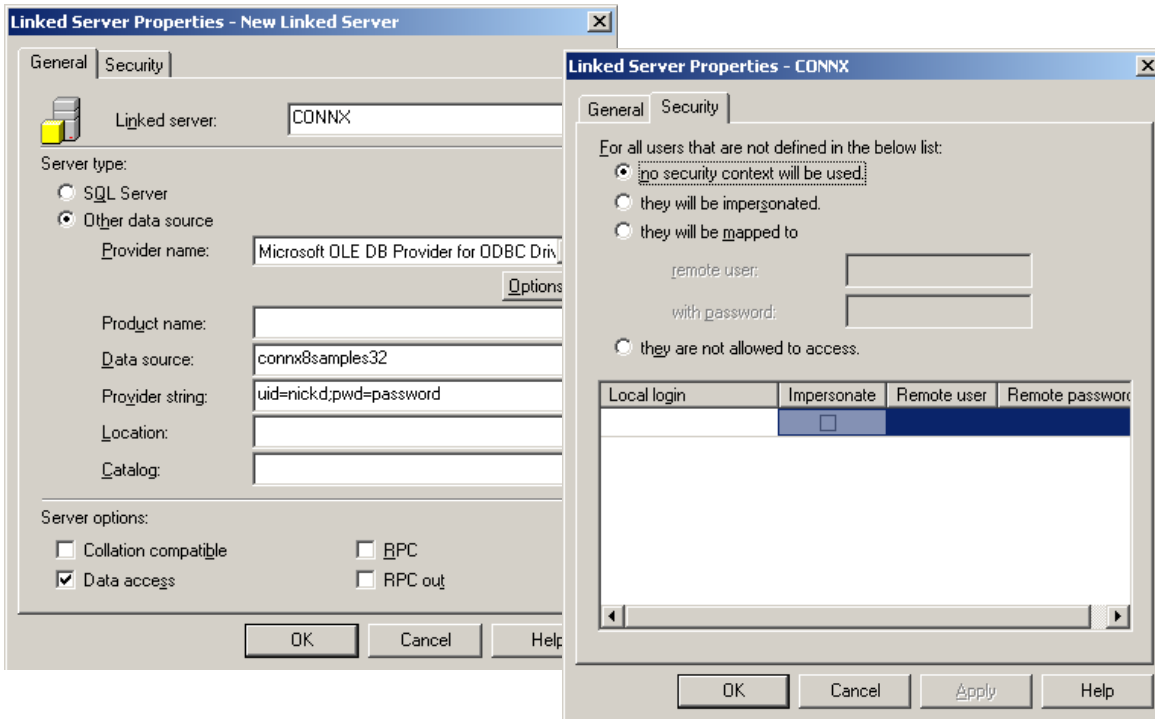
3. Click the **Options** button under the **Provider Name** text box. The **Provider Options** dialog box appears. Select the **Zero Level Only, Allow In Process, and Non Transacted Updates** options. Click the **OK** button.



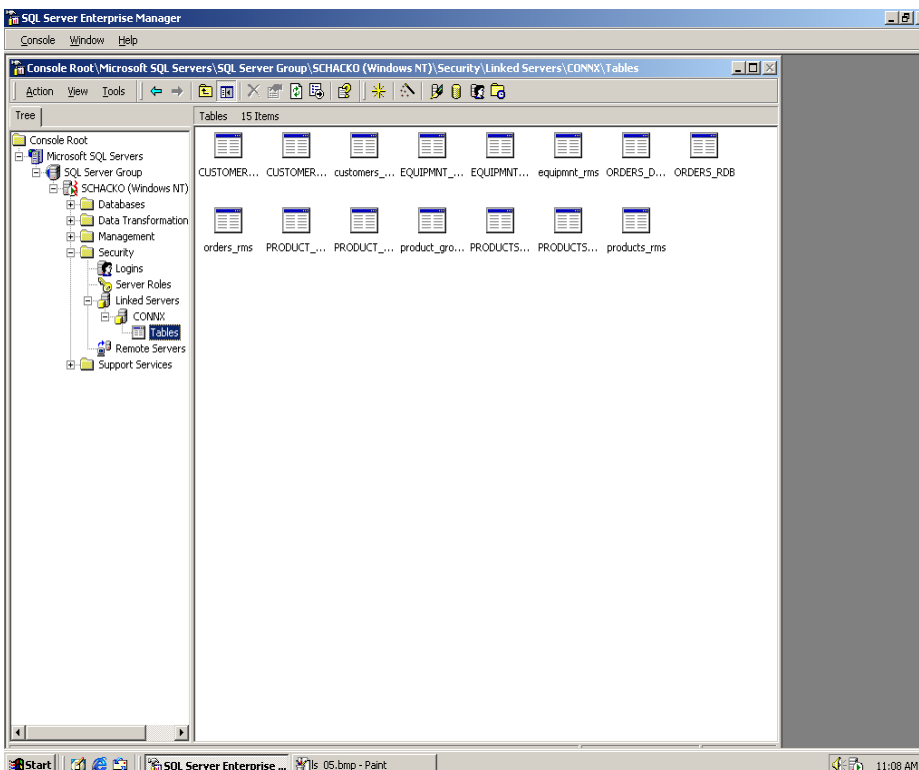
Using Microsoft SQL Server Linked Servers utility to access CONNX data sources

Page 2 of 2

4. Type a valid CONNX System data source name (DSN), configured on the same machine, in the **Data Source Name** text box. Type a CONNX Data Dictionary user name and password in the **Provider String** text box using the following syntax: uid=username;pwd=password. It is not necessary to include a Product Name, Location, or Catalog. Under **Server Options**, select the **Data Access** check box.



5. Select the **Security** tab. Select the **No Security Context** option. Click the **OK** button.



6. The CONNX server and its tables are added to the list of **Linked Servers** in the **Enterprise Manager** window. Select the database name under **Linked Servers** in the **Enterprise Manager** window. Click on the imported tables to verify that the linked server is configured correctly. The table list should appear in the right pane of the Enterprise Manager window.