

## CONNX for DataFlex and POWERflex

The CONNX DataFlex and POWERflex Module provides secure, real-time, read/write, SQL access to DataFlex and POWERflex files on PC and Unix systems with connectivity through TCP/IP.

### Compliance

ODBC Level 2 Compliant.  
ODBC 3.51 Driver  
JDBC Type 3 Driver  
OLE DB 2.5 Driver  
.NET 1.1 Driver

### Join DataFlex and POWERflex with Multiple Data Sources

In conjunction with other products in the CONNX suite, you can perform seamless joins between two or more supported disparate databases using ODBC, OLE DB, JDBC, and .NET. CONNX for DataFlex and POWERflex access is fast and efficient. With CONNX, a single metadata model can be created that spans all enterprise data sources and applications requiring data access. The result is an enterprise-wide view of data that provides a reusable standards-based framework for information access. To the user or application, data appears as if it existed in a single federated relational database.

### SQL and CONNX for DataFlex and POWERflex

CONNX supports ANSI SQL (Insert, Update, Select, and Delete); group by, distinct, aggregate (AVG, MIN, MAX, SUM, and COUNT), and all substring, string, date, conversion, and math functions. Nested inner and outer left/right joins are supported, as well as subqueries and correlated subqueries. CONNX also supports Unions and Insert/Select.

### Views

CONNX supports the creation of views, which facilitate hiding table relationships from the end user. CONNX Views facilitate the creation of heterogeneous joins between multiple disparate databases.

### Data Conversions

CONNX supports over 400 data types and performs bi-directional data conversions for data updates and retrieves.

### Popular Program Access

As with all databases supported by CONNX, CONNX for DataFlex and POWERflex supports all desktop applications and has been tested with Microsoft Access, Microsoft Excel, Microsoft Visual Studio, including Visual Basic/C++, etc., Delphi, PowerBuilder, Impromptu, ReportNET, Lotus Approach, Crystal Reports and vendors such as Cognos and Business Objects. CONNX for Dataflex/POWERflex also supports ADO and ASP. NET (Active Server Pages) and JDBC is used with Websphere and Apache Tomcat.

### Security Preserved and Extended

The CONNX CDD provides additional field and table-level encryptable security by group or user, ensuring the security of sensitive information. CONNX also supports row level security with CONNX Views. Additionally, the CONNX Data Dictionary is encrypted to secure sensitive information.

### Table Redefinition

The CONNX Data Dictionary supports multiple record layouts of the same DataFlex/POWERflex files, based on a "record type" field.

### Record Definition Import

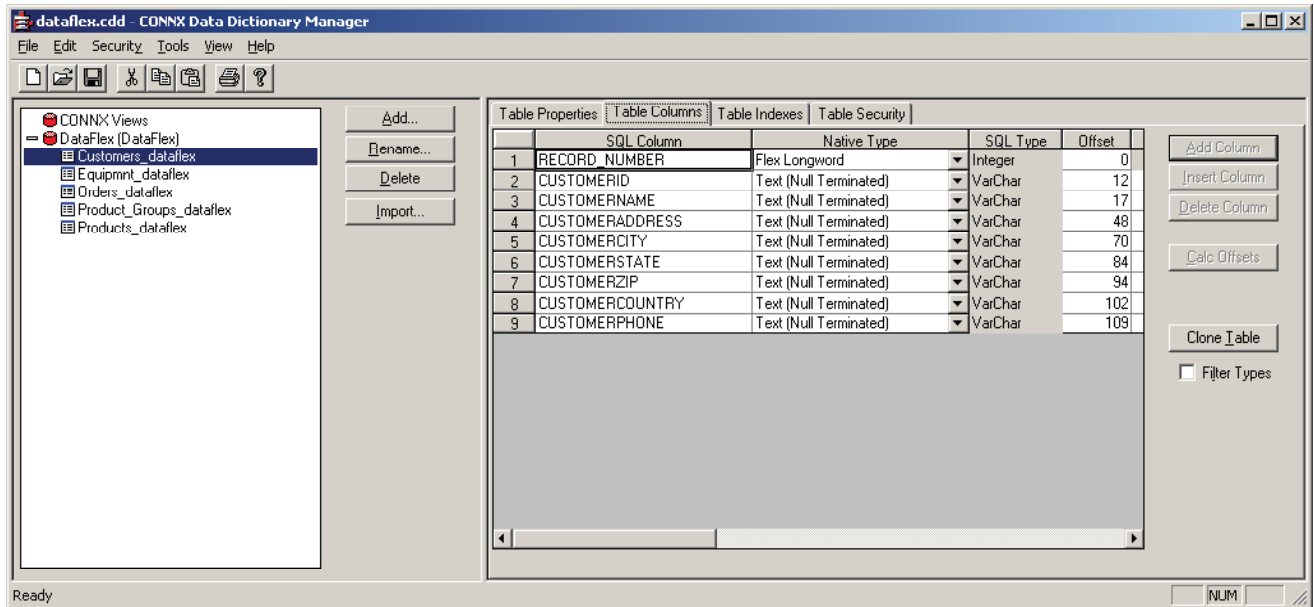
CONNX imports table definitions directly from DataFlex/POWERflex Databases.

## CONNX for Dataflex and POWERflex

Features	Benefits
<ul style="list-style-type: none"> <li>▶ Federate with other relational, non-relational, networked, hierarchical, object, and flat-file database information through a single, easy-to-use, SQL-based interface.</li> <li>▶ Data at your fingertips – anything from legacy data to recently added content to application information – anytime, anywhere.</li> <li>▶ A reusable standards-based framework for information access that drastically lowers the short- and long-term costs usually associated with complex enterprise data solutions.</li> </ul>	<ul style="list-style-type: none"> <li>▶ Boosts productivity and efficiency of end users and application builders by connecting different functions within the enterprise.</li> <li>▶ Shortens development time on projects using open standards.</li> <li>▶ Improves time to market.</li> <li>▶ Provides cost-effectiveness.</li> <li>▶ Preserves initial investment.</li> </ul>
<ul style="list-style-type: none"> <li>▶ Access from Microsoft Windows, Unix and Linux productivity tools, database applications, and development environments (VB.NET, C# and JDBC) that are used with Websphere, Apache Tomcat.</li> </ul>	<ul style="list-style-type: none"> <li>▶ Enhances flexibility.</li> </ul>
<ul style="list-style-type: none"> <li>▶ Proven scalability, supporting any number of client machines.</li> <li>▶ Compatible with any .NET- ODBC-, OLE DB-, or JDBC-compliant application.</li> </ul>	<ul style="list-style-type: none"> <li>▶ Enables use of open standards interfaces with investment protection.</li> <li>▶ Minimizes resource utilization.</li> <li>▶ Utilizes current infrastructures with no additional cost.</li> </ul>
<ul style="list-style-type: none"> <li>▶ Open-platform technology that integrates with existing systems so you can manage them with ease.</li> </ul>	<ul style="list-style-type: none"> <li>▶ Extends the functionality and life of existing architecture.</li> <li>▶ Preserves investments.</li> </ul>
<ul style="list-style-type: none"> <li>▶ Windows, Unix and Linux client support.</li> </ul>	<ul style="list-style-type: none"> <li>▶ Supports existing IT infrastructure at no additional cost.</li> <li>▶ Eliminates staff re-training.</li> </ul>
<ul style="list-style-type: none"> <li>▶ Field and record level protection.</li> <li>▶ Thread-safe support for multi-threaded applications.</li> </ul>	<ul style="list-style-type: none"> <li>▶ Provides maximum levels of data security.</li> </ul>
<ul style="list-style-type: none"> <li>▶ Heterogeneous joins for the creation of reports that consolidate data spanning multiple data sources.</li> </ul>	<ul style="list-style-type: none"> <li>▶ Maintains integrity of data.</li> </ul>
<ul style="list-style-type: none"> <li>▶ Real-time read/write access to DataFlex/POWERflex data.</li> </ul>	<ul style="list-style-type: none"> <li>▶ Enhances flexibility.</li> </ul>
<ul style="list-style-type: none"> <li>▶ Multiple views support.</li> <li>▶ Extensive data type conversion support.</li> <li>▶ Flexible data format and storage.</li> </ul>	<ul style="list-style-type: none"> <li>▶ Minimizes complexity for end users.</li> </ul>
<ul style="list-style-type: none"> <li>▶ Comes bundled with the CONNX InfoNaut querying and reporting tool that enables users to instantly view their data.</li> </ul>	<ul style="list-style-type: none"> <li>▶ Easy to install and use.</li> </ul>

## CONNX for Dataflex and POWERflex

### CONNX Data Dictionary Manager



CONNX Solutions, Inc. ,  
2039 152nd Avenue NE, Redmond, WA 98052  
Toll Free: 1.888.88CONNX Tel: 425.519.6600  
[sales@connx.com](mailto:sales@connx.com)  
[www.connx.com](http://www.connx.com)

All trademarks, registered trademarks, product names, and company names mentioned herein are acknowledged as the property of their respective owners.