

## InfoNaut Professional

### Specs

#### Requirements

CONNX client  
32 MB RAM  
32 MB hard drive

#### Client Platforms

Windows 2000/XP/2003/  
Vista/2008

### At a Glance

#### Efficient

Query recall  
Connection recall  
Asynchronous execution

#### Functional

Read/write capability  
View query execution  
Simple query design  
Cross-platform joins  
Save in multiple formats  
Create reports

#### Adaptable

Industry standards-based  
Universal SQL syntax

#### Easy to Use

Metadata repository  
User-friendly GUI

#### Secure

NT integrated security

### Overview

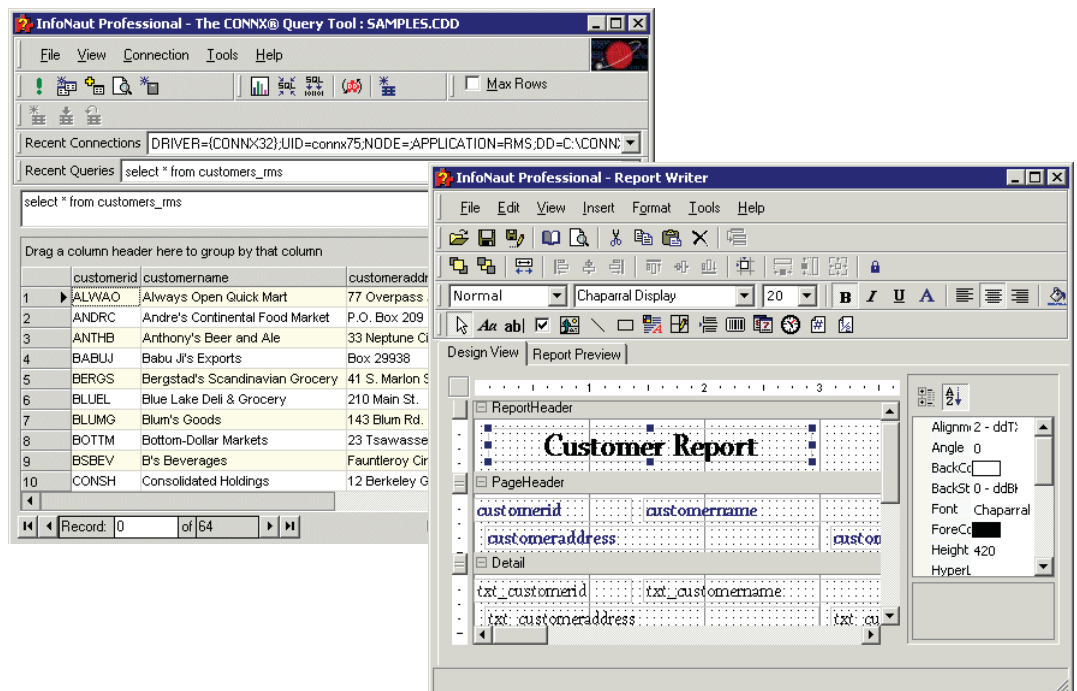
InfoNaut Professional is a desktop query/reporting tool that enables end users to quickly access information from enterprise databases. InfoNaut Professional was designed to meet the needs of CONNX customers who wish to access information simply and quickly and to present reports in a readable format. Queries and SQL statements created in InfoNaut Professional can be saved as XML files, Microsoft Query .dqy files, Microsoft Excel .xls files, HTML pages, Active Server Pages (.asp), .csv files, .sql files, and .txt files.

The Report Writer feature of InfoNaut Professional enables users to create reports from table information or queries. Reports can be used for simple or formal presentations and can be quickly customized using the range of formatting tools.

The Report Writer has OLE capability, which ensures that a variety of OLE-based objects, including charts, graphs, graphics, tables, and clip art, can be added to or inserted into a report.

Reports created with the InfoNaut Professional Report Writer can be saved as Adobe Acrobat .pdf files, HTML pages, Microsoft Excel spreadsheets, Rich Text Format files, .tif files, .csv files, and .txt files.

### InfoNaut Professional



Report Writer Example

## InfoNaut & InfoNaut Professional

### Comparison of InfoNaut and InfoNaut Professional Features

InfoNaut and InfoNaut Professional were designed to meet the needs of CONNX customers who wish to access information simply and quickly. Unless specifically designated as features and functions solely of InfoNaut Professional, all features and functions of InfoNaut are available in both InfoNaut versions. The table below contains a list of the available features and functions in both products.

Feature or Function	InfoNaut	InfoNaut Professional
Query memory, which enables users to recall queries executed	x	x
Connection memory, which automatically prompts to recommend to the last used data source upon startup	x	x
Asynchronous execution, which enables the data source connection and query execution to occur asynchronously.	x	x
Read/write capability, which enables users to query and update data directly on the grid.	x	x
CDD modification capability.		x
Ability to create views.		x
Results that can be saved as XML files, Microsoft Query .dqy files, Microsoft Excel .xls files, HTML pages, Active Server Pages (.asp), .csv files, .sql files, and .txt files.		x
Benchmark mode, which enables users to perform queries multiple times and to view the average execution time.		x
Ad hoc reports which can be saved as Adobe Acrobat .pdf files, HTML pages, Microsoft Excel spreadsheets, Rich Text Format files, .tif files, .csv files, and .txt files.		x

CONNX Solutions, Inc.  
2039 152nd Avenue NE, Redmond, WA 98052  
Toll Free: 1.888.88CONNX Tel: 425.519.6600  
[sales@connx.com](mailto:sales@connx.com)  
[www.connx.com](http://www.connx.com)

All trademarks, registered trademarks, product names, and company names mentioned herein are acknowledged as the property of their respective owners.