

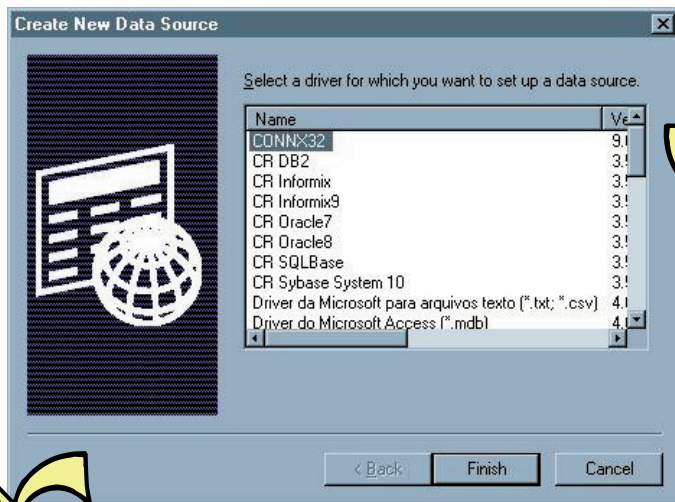
CONNX 9.0

Quick Reference Card

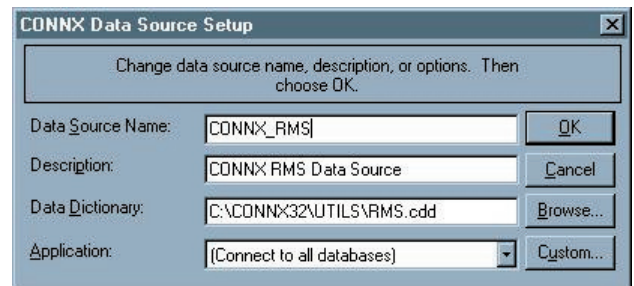
Building Reports Using CONNX32 ODBC and Business Objects™ 5.1

It is possible to connect to the CONNX32 driver using Generic ODBC Datasource option in Business Objects. The following steps outline the process of creating a Universe and building a report using Business Objects 5.1.

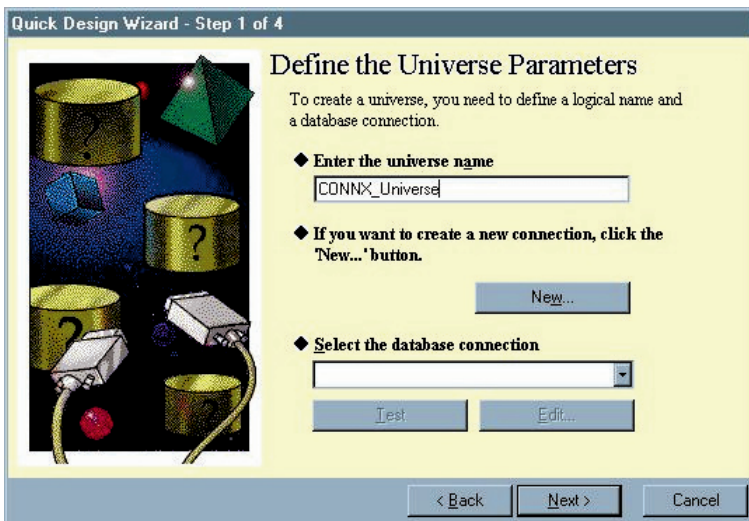
1. Create an ODBC data source in the Windows ODBC Data Source Administrator. Click Start, then click Control Panel, then click Administrative Tools, then click Data Sources (ODBC). Select the System DSN tab and click Add. Select CONNX32 on the Create New Data Source screen, and then click Finish.



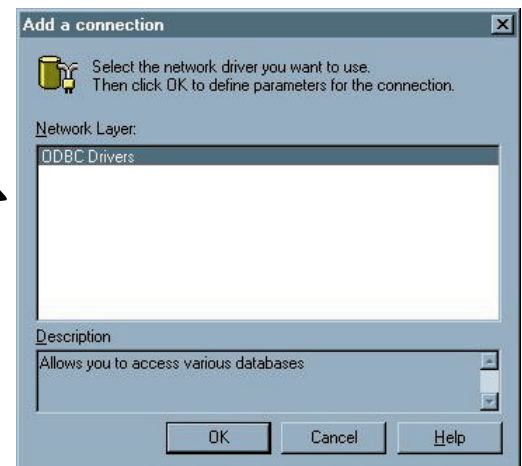
2. Create a new Data Source Name (DSN) and description of your choice, and then browse to the appropriate CONNX Data Dictionary (CDD). Click OK to create the DSN.



3. Create a Universe using the Business Objects Designer. Click Start, click All Programs, select Business Objects x.x, and then click Designer. Open the Quick Design Wizard, and then create a name for the Universe. Click the New button to create a new database connection.

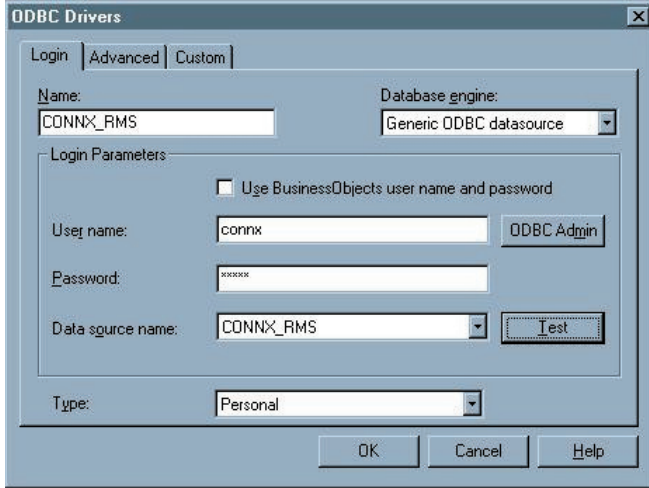


4. Select ODBC Drivers, and then click OK.

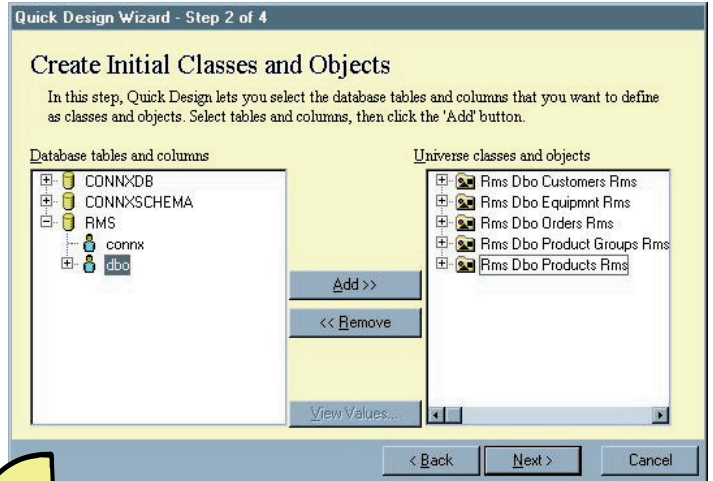


Building Reports Using CONNX32 ODBC and Business Objects 5.1

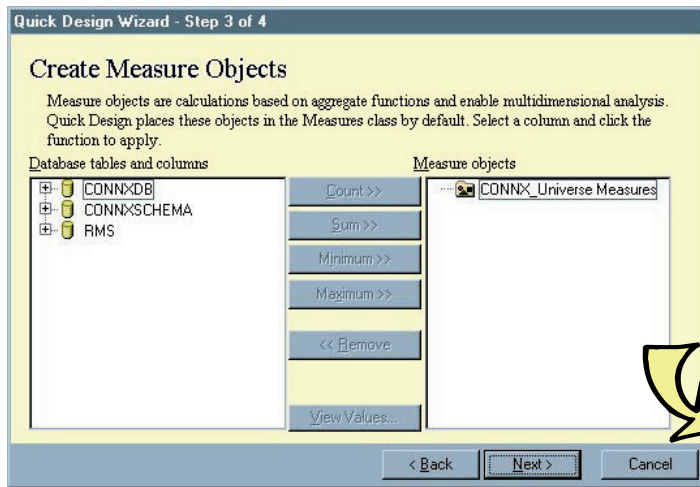
- 5. Create a new Name of your choice for the connection. For Database engine, select Generic ODBC data source from the list box. Select the appropriate data source name and enter the user name and password associated with that DSN. Click the Test button to confirm the connection, and then click OK.



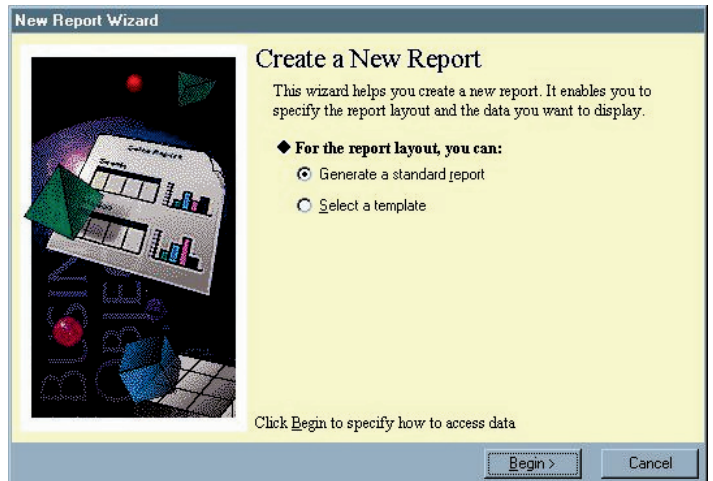
- 6. Click Next to create Initial classes and objects. Select and add the appropriate databases, tables, and fields to the Universe, then click Next.



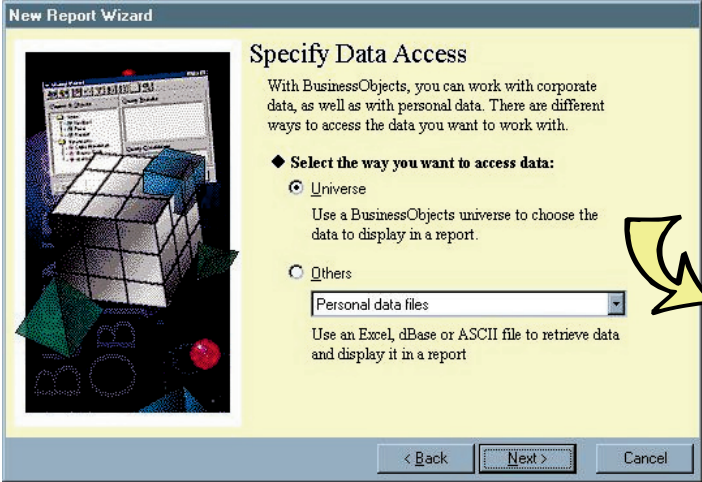
- 7. If you wish, add the necessary Measure Objects and click Next. Then click Finish to end the Universe creation process. Save the new Universe under the name of your choice .



- 8. Produce a report using the Universe you created. Click on Start, click All Programs, click Business Objects x.x, and then click Business Objects. Click New, and then click Begin.



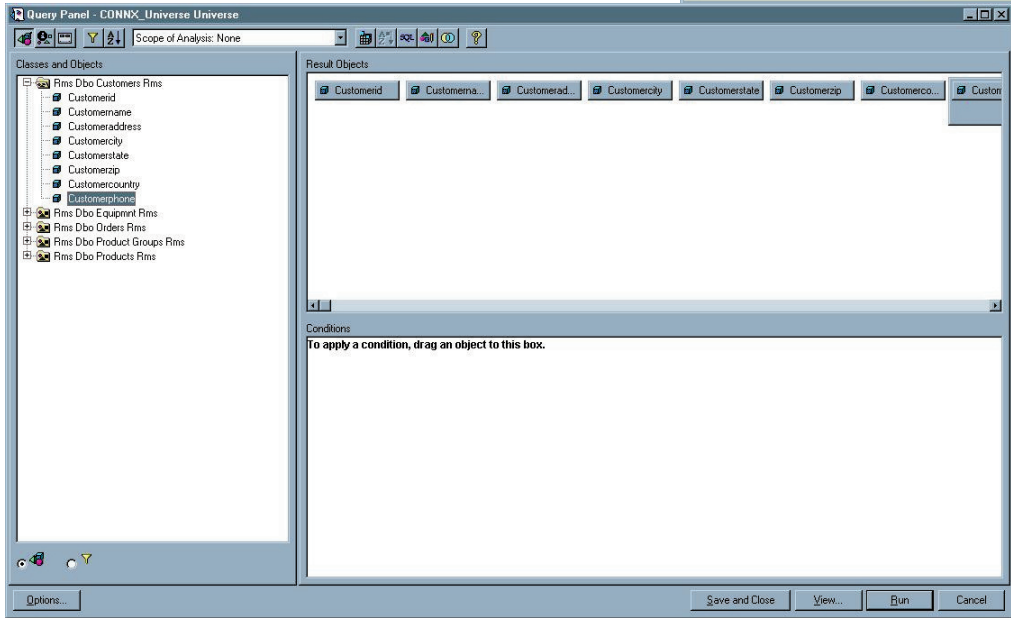
9. On the next screen, select the Universe radio button, and then click Next.



10. Select the appropriate Universe from the list of Available Universes, and then click Finish.



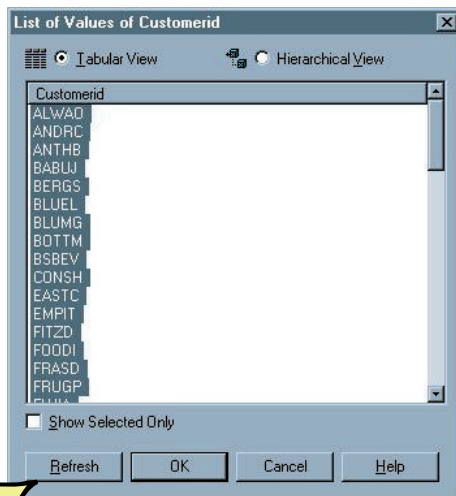
11. On the main report-building window, expand the classes by click the Plus "+" symbols next to them. Double-click the objects that are to be included in the report. Each object must be added to the report separately.



Building Reports Using CONNX32 ODBC and Business Objects 5.1

Page 4 of 4

- To add the necessary conditions to the report right-click on the appropriate object name and click on Apply Simple Condition. Select the necessary conditions and click Ok to add that condition to the object. Similarly, to sort by a certain object, right-click and select the appropriate sorting option.



- Finalize the report by saving it, using a name and directory of your choice. Then click Run to view the finished product.

Customerid	Customername	Customeraddress	Customercity	Customerstate	Customerzip	Customercount	Customerphone
ALWAO	Always Open Qui	77 Overpass Ave.	Provo	UT	84604	USA	(801) 555-7424
ANDRC	Andre's Continent	P.O. Box 209	Bellingham	WA	98226	USA	(206) 555-9674
ANTHB	Anthony's Beer ar	33 Neptune Circle	Clifton Forge	VA	24422	USA	(509) 555-8647
BABUJ	Babu J's Exports	Box 25938	London		WX1 5LT	UK	(71) 555-8248
BERGS	Bergstad's Scand	41 S. Marlon St.	Seattle	WA	98104	USA	(206) 555-3453
BLUJEL	Blue Lake Deli &	210 Main St.	Port Townsend	WA	98368	USA	(206) 555-3044
BLUMG	Blum's Goods	143 Blum Rd.	London		NW1 2BP	UK	(71) 555-3013
BOTTM	Bottom-Dollar Ma	23 Tsawassen Bk	Tsawassen	BC	T2F 8M4	Canada	(604) 555-4729
BSBEV	B's Beverages	Fauntleroy Circus	London		EC2 5NT	UK	(71) 555-1212
CONSH	Consolidated Hol	12 Berkeley Gard	London		WX1 6LT	UK	(71) 555-2282
EASTC	Eastern Connecti	35 King George	London		WQ3 6FW	UK	(71) 555-0297
EMPIT	Empire Trading	7 Baxter Hill	London		SW2 1HJ	UK	(71) 555-3838
FITZD	Fitzgerald's Deli	14 E. Eastway Dr	Bellevue	WA	98006	USA	(206) 555-5575
FOODI	Foodmongers, Inc	418 - 6th Ave.	Walla Walla	WA	99362	USA	(509) 555-7689
FRASD	Fraser Distribut	North Kingsgate	London		WC1 8LP	UK	(71) 555-3323
FRUGP	Frugal Purse Stri	418 Databitz Ave	Pocatello	ID	83201	USA	(208) 555-9787
FUJIA	Fujiwara Asian Sq	72 Dowlin Pkwy.	Phoenix	AZ	85306	USA	(602) 555-5648
GARCA	Garcia's All-Day F	401 Rodeo Dr.	Auburn	WA	98002	USA	(206) 555-9468
GREAL	Great Lakes Food	2732 Baker Blvd.	Eugene	OR	97403	USA	(503) 555-7555
HANOP	Hanover Poultry	400 Hanover Squ	London		WA1 1DP	UK	(71) 555-9399
HISHG	Highbridge Gourm	361 Pitt St.	Jamaica	NY	11451	USA	(607) 555-9947
HUNGO	Hungry Owl All-Ni	1001 West Pend	Vancouver	BC	V3F 2K2	Canada	(604) 555-3932
ISLAT	Island Trading	454 Crowther Wa	Hedge End	Lancashire	LA9 9XB	UK	(24) 555-8989
KINGG	Kingsgate Goods	89 Gray's Inn Rd.	London		WC2 8LR	UK	(71) 555-8282
LAPLA	La Playa Mini Mar	2044 Seahorse B	Port Townsend	WA	98368	USA	(206) 555-6274
LAUGB	Laughing Bacchu	2319 Oak St.	Vancouver	BC	V3F 2K1	Canada	(604) 555-3392
LAZYK	Lazy K Kountry S	12 Orchestra Ter	Walla Walla	WA	99362	USA	(509) 555-7969
LEESO	Lee's Oriental Foc	44 McKnight Rd.	Portland	OR	97229	USA	(503) 555-6306
LETSS	Let's Stop N Shop	87 Polk St.	San Francisco	CA	94117	USA	(415) 555-9938
LILLO	Lillegard's Old Co	89 Rain Way	Portland	OR	97219	USA	(503) 555-9753
LIVEO	Live Oak Hotel G	7384 Washington	Portland	OR	97229	USA	(503) 555-8946
MARGF	Margot's Fromage	340 Mile High Blv	Denver	CO	80202	USA	(303) 555-6535
MERRG	Merry Grape Wini	304 King Edward	East Vancouver	BC	V3F 4A9	Canada	(604) 555-2933
MORNS	Morning Star Heal	45 N. Terminal W	Helena	MT	59601	USA	(406) 555-9725
NORTS	North/South	300 Queensbridg	London		SW7 1RZ	UK	(71) 555-7733
OCEAQ	Oceanview Quick	231 N. Ukiah Rd.	Aloha	OR	97006	USA	(503) 555-6868
OCONT	O'Connor's Town	45 E. 23rd St.	Drain	OR	97435	USA	(503) 555-5840
OLDWO	Old World Delicat	2743 Bering St.	Anchorage	AK	99508	USA	(907) 555-7584
PEPFR	Perim's Rofines	7 Narhnes Way	Phoenix	AZ	85071	USA	(602) 555-9375