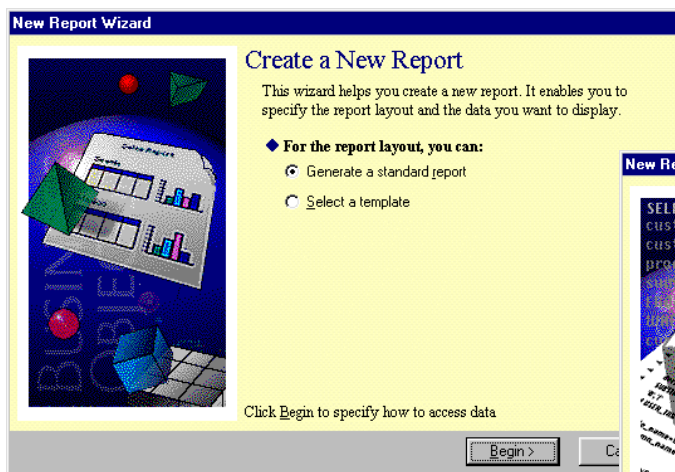
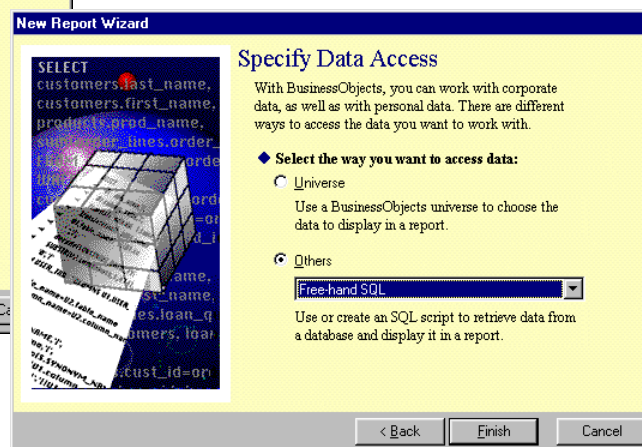


Use Business Objects query, reporting, and data analysis tool as a front end application and to gain live access to data stored in a CONNX Data Dictionary (CDD). To gain access to CONNX CDD files, you first need to log on to Business Objects as a CONNX user. To do this, you must have a “preconditioned” CDD that contains all of the information it needs for a successful login: server name, user name, and password. Verify that these three items exist for the CDD you intend to use before you attempt to log in to Business Objects. If you want to add a new user name specifically for Business Objects, follow the instructions found under CONNX Security in the CONNX online User Reference Guide before proceeding.

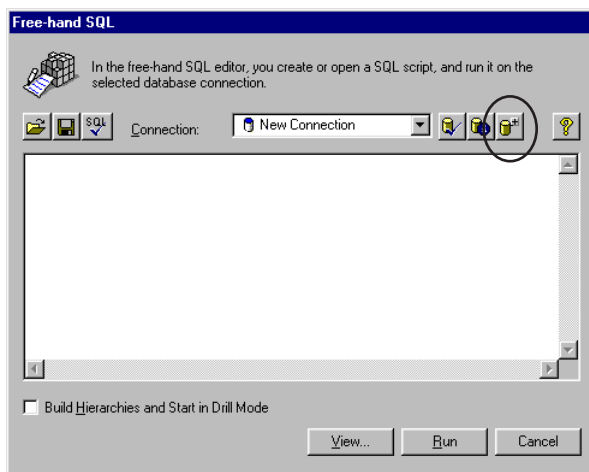
1. Open **Business Objects**. The **New Report Wizard** appears. Select **Generate a Standard Report**, and then click the **Begin** button.



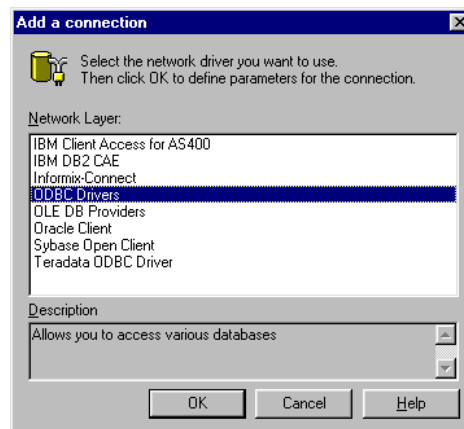
2. In the next window, select **Free-hand SQL** in the **Others** drop-down list, and then click the **Finish** button.



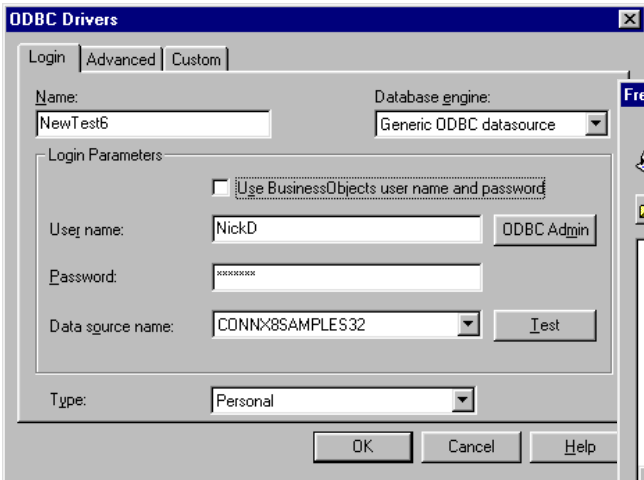
3. The **Free-hand SQL** dialog box appears. Click the **New Connection** button.



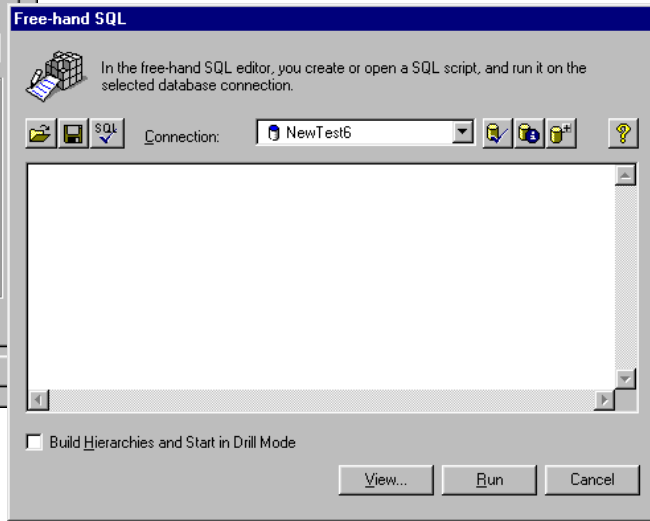
4. The **Add a Connection** dialog box appears. Select **ODBC Drivers**, and then click the **OK** button.



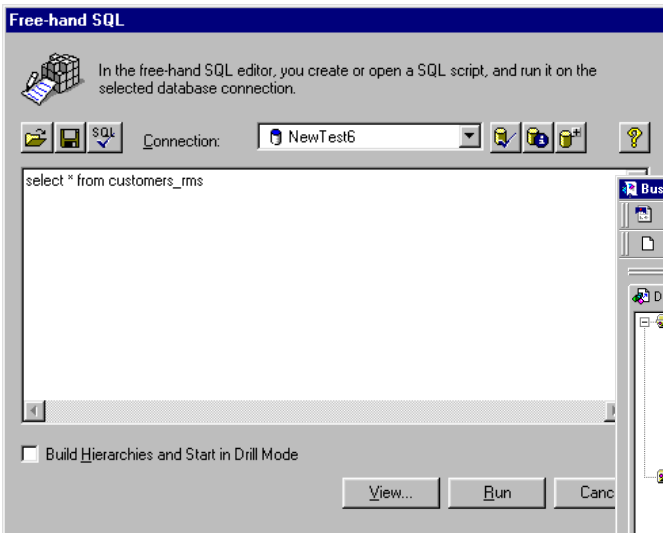
- The **ODBC Drivers** dialog box appears. Type the name of your new connection. Under **Database Engine**, select **Generic ODBC Datasource**. Type your CONNX user name and password, and then select your data source name from the drop-down list box.



- Click the **OK** button. The Freehand SQL dialog box appears.



- Type an SQL Query in the large pane, and then click the **Run** button.



- The query results appear in the Business Objects window as Document 1. Within this window, you can rename the report, change field names, and generally change the entire look of the report. See the Business Objects documentation for more details.

