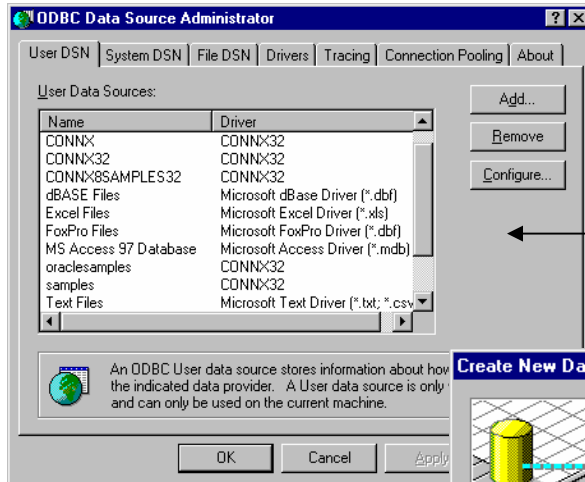
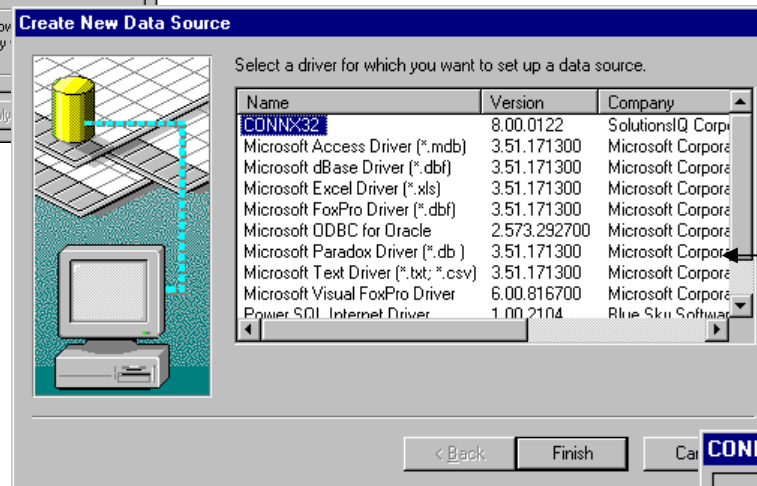


Configuring a Data Source Name for the ODBC Driver



1. Click the **Start** button, point to **Settings**. In **Control Panel**, click **Administrative Tools** (Windows 2000 and above), and then double-click the **Data Sources (ODBC)** icon. Click the **Add** button in the **ODBC Data Source Administrator** dialog box. There are three categories of data sources: **User DSN**, **System DSN**, or **File DSN**. *

CONNX data sources comprise accessible data, its operating system, the DBMS (or file system), and the network platform. Once the data source is configured, CONNX can be used with front-end applications, including Microsoft® Access, Microsoft® Excel, Crystal Reports, and Cognos Impromptu.



2. A list of installed drivers is displayed in the **Create New Data Source** dialog box. CONNX32 is the ODBC driver. Double-click **CONNX32**. The **CONNX Data Source Setup** dialog box is displayed.

*
User DSN: A data source name only relevant to the current user.
System DSN: A data source name used only by the client computer.
File DSN: A separate file placed on a network and available to multiple clients.

