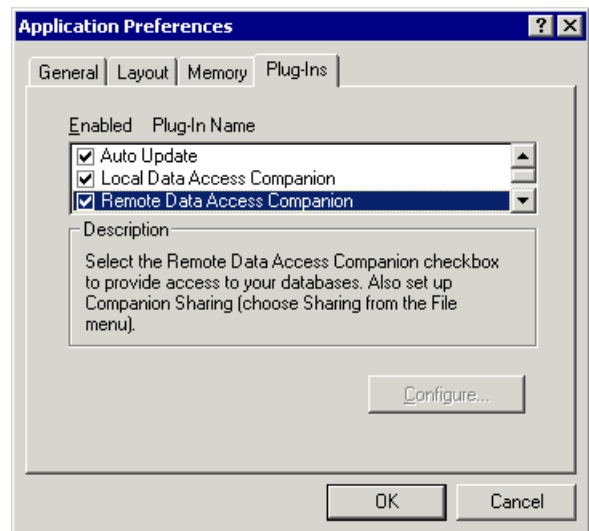


Before using FileMaker Pro with CONNX, you must first configure a TCP/IP connection to CONNX from within the FileMaker Pro application. Once you have completed that task, you must then create a data source name for your FileMaker Pro tables.

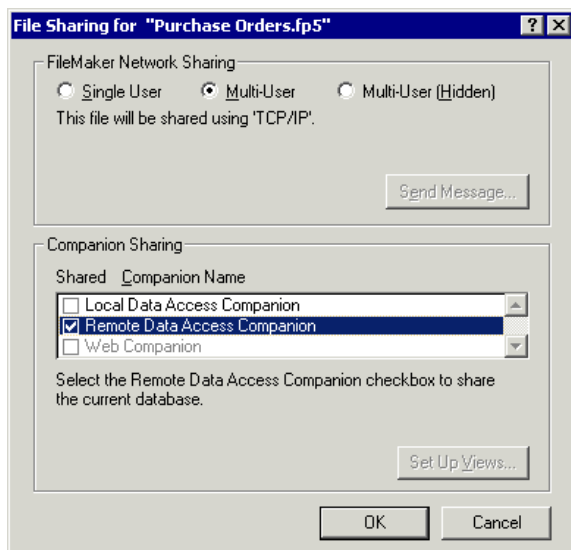
1. Open FileMaker Pro. If you already have an existing database that you want to use with CONNX, select Open an Existing File In the New Database dialog box, and then click the OK button. You can also choose to create a new file through the Create a New File Using a Template option.



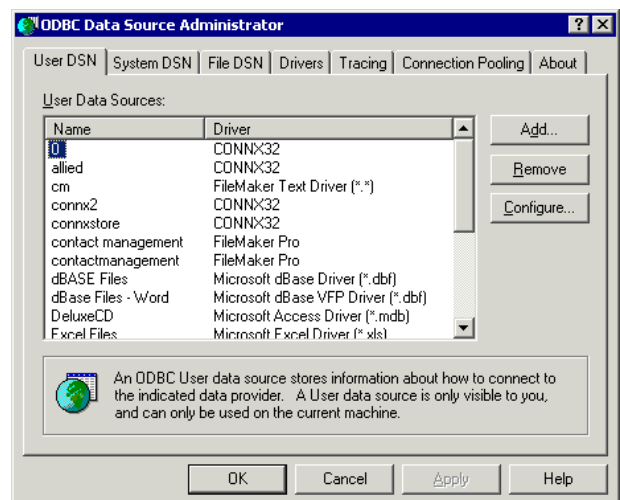
2. Open the database you intend to use with CONNX. Under Edit, select Preferences, and then click Application. Select the Plug-Ins tab, and then ensure that the check box for Remote Data Access Companion has been selected. Click the OK button.



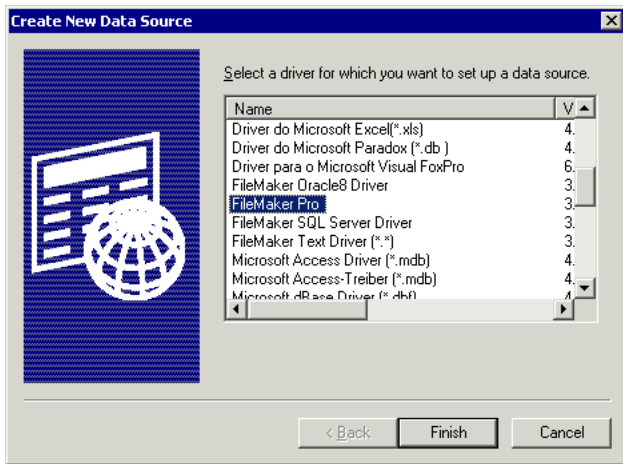
3. On the File menu, select Sharing. The File Sharing dialog box appears. Under FileMaker Network Sharing, select the Multi-User radio button. Click the Remote Data Access Companion check box, and then click the OK button.



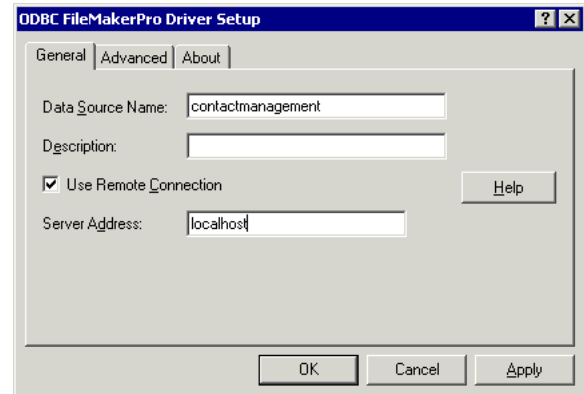
4. Once you've created a FileMaker PRO data source name, you will be able to easily access your FileMaker Pro data through CONNX. To create a data source name that you can use with CONNX, go to Start, Settings, Control Panel, and then click Administrative Tools. Select Data Sources (ODBC). The ODBC Data Source Administrator window opens.



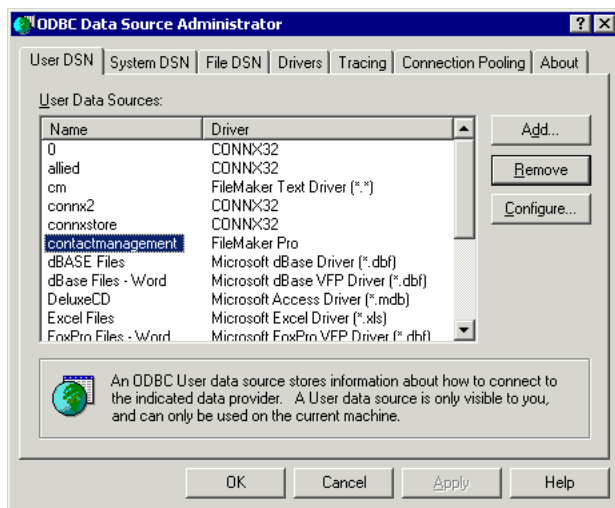
- Click the Add button, and then select Filemaker Pro from the list in the Create New Data Source dialog box.



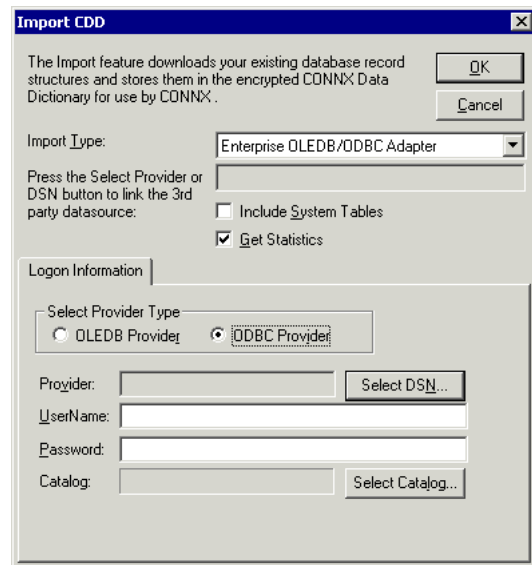
- Click the Finish button. The ODBC FileMaker Pro Driver Setup dialog box appears. Enter a data source name and a description, if desired. You must click the Use Remote Connection check box. Enter a computer name (yours), or "localhost" in the Server Name text box.



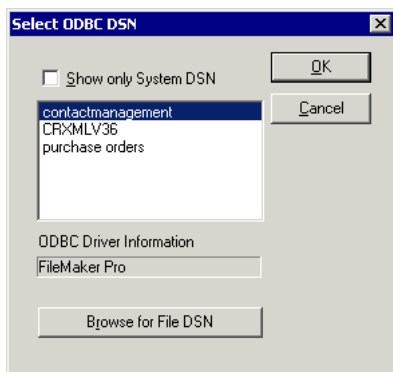
- The new data source name appears in the ODBC Data Source Administrator dialog box as a FileMaker Pro data source. Click the OK button.



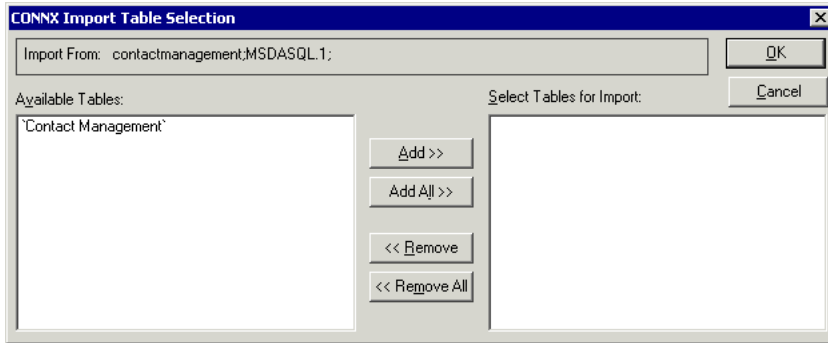
- Open the CONNX Data Dictionary Manager window. Click the Import button. Select Enterprise OLE DB/ODBC Adapter from the Import Type list box, and then click the ODBC Provider radio button. Click the Select DSN button.



- The Select ODBC DSN dialog box appears. Select the data source name you created, and then click the OK button.



9. Click the OK button in the Import CDD dialog box. The CONNX Import Table Selection dialog box appears.



10. Click the Add or Add All button to select tables for import, and then click the OK button. The selected tables appear in the CONNX Data Dictionary Manager window as a table. Click the Table Columns tab to view detailed information about the table contents.

