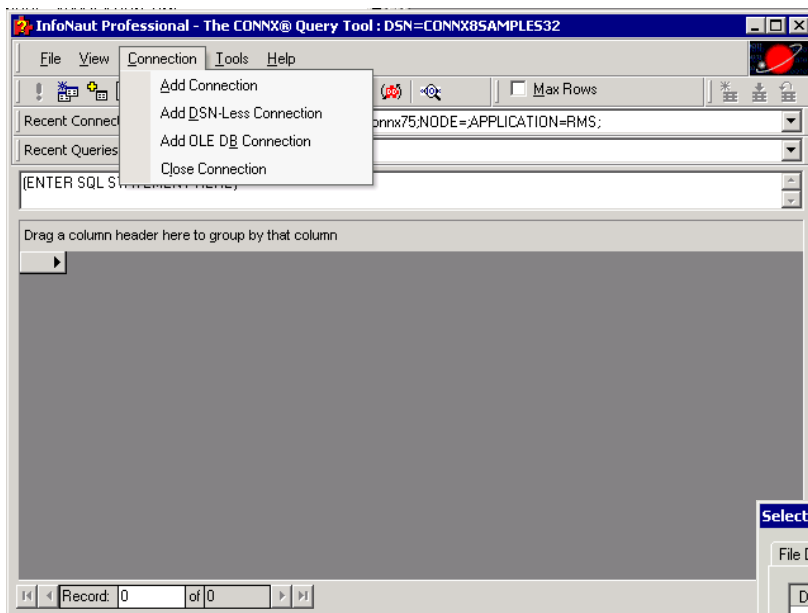
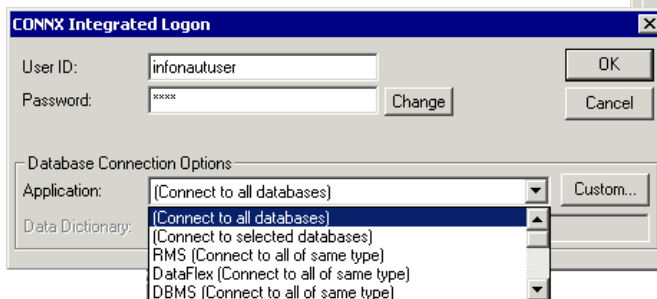
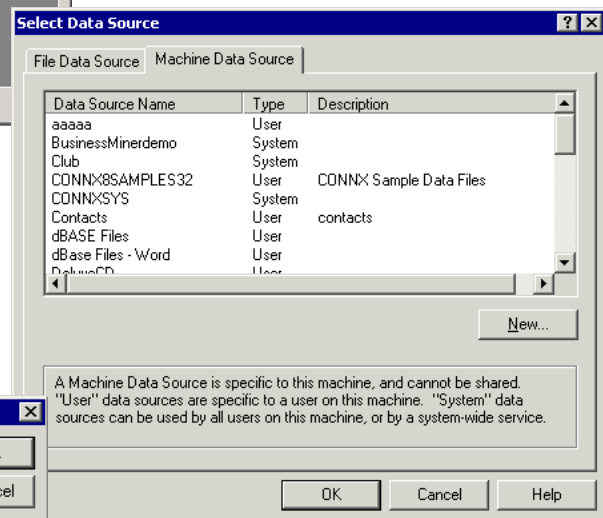


Use the InfoNaut Professional query, reporting, and data analysis tool as a front-end application and to gain live access to data stored in a CONNX Data Dictionary (CDD). To gain access to CONNX CDD files, you first need to log on to InfoNaut Professional as a CONNX user. To do this, you must have a CDD that contains all of the information it needs for a successful login: server name, user name, and password. Verify that these three items exist for the CDD you intend to use before you attempt to log on to InfoNaut Professional. If you want to add a new user name specifically for InfoNaut Professional, follow the instructions in Chapter 2, CONNX Security, in the CONNX 8.9 Security and Administration Guide before proceeding.



1. Open **InfoNaut Professional**. Select **Add Connection** on the **Connection** menu. (If this is the first time you open InfoNaut, the **Select Data Source** dialog box appears.)

2. The **Select Data Source** dialog box opens. Select the **Machine Data Source** tab, and then click **CONNXXSamples32** to open the CONNX sample databases.



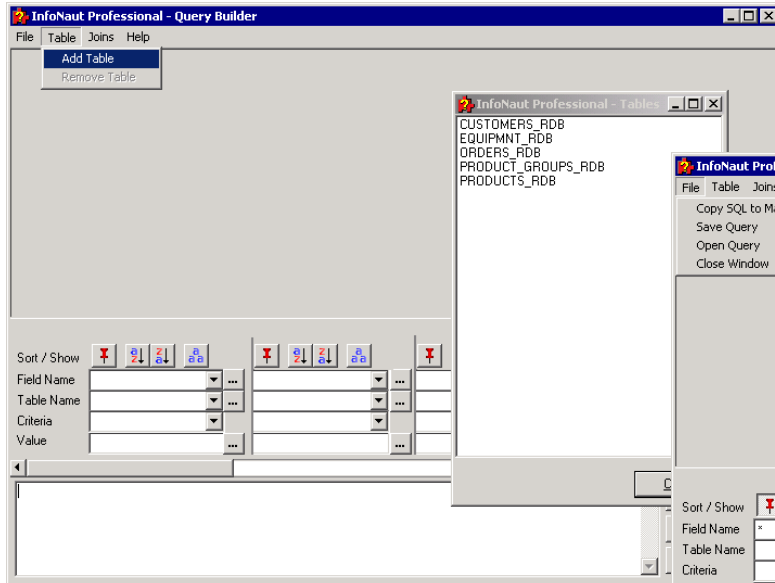
3. The **CONNX Integrated Logon** dialog box opens. Log on using your CONNX user name and password, select a database or databases, and then click the **OK** button.

**Using InfoNaut Professional to access CONNX data sources**  
**Page 2 of 2**

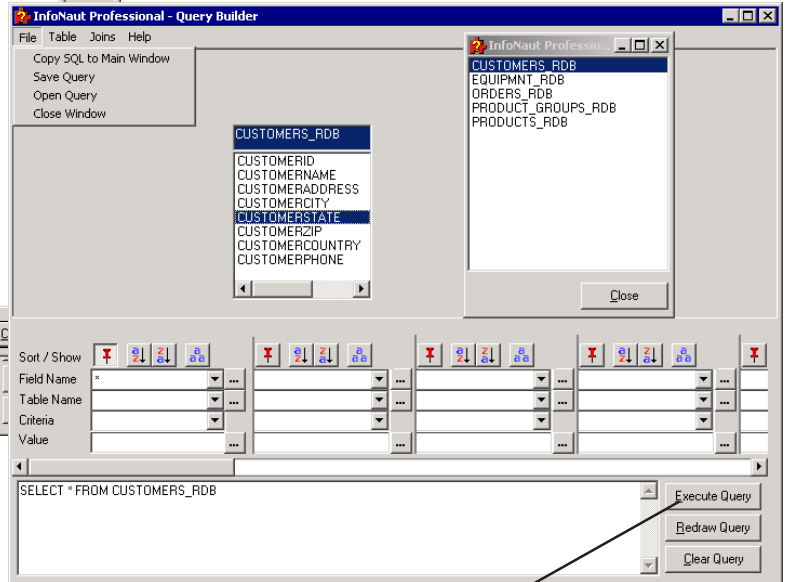
4. Click the **Build Query** button to open the InfoNaut Professional - Query Builder window.



**Build Query button**



5. Select **Add Table** on the Table menu to open the list of available data sources. Double-click on a table or tables to add the table to the top pane of the Query Builder.

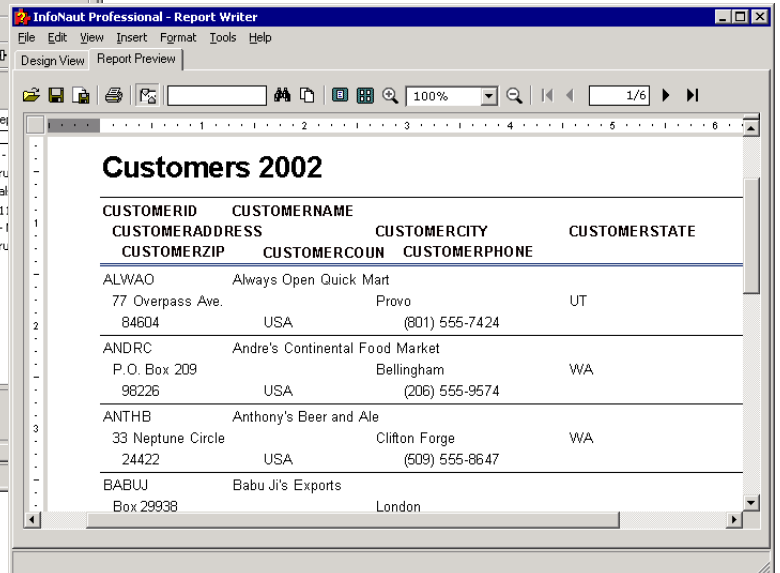
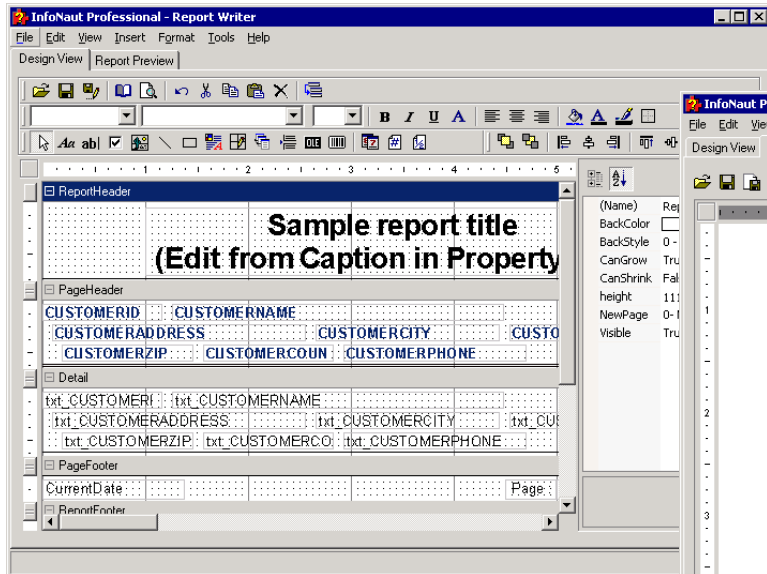


**Execute Query button**

6. Execute the query by clicking the **Execute Query** button and then save the query to the main InfoNaut Professional window by selecting **Copy SQL to Main Window** on the **File** menu.

7. Turn your query into a professional-looking report by clicking the **Create Report** button. The InfoNaut Professional Report Writer opens.

8. Use the range of controls to design the layout and scope of your report. Group headers and footers, aggregate functions, images, and OLE objects are just a few of the features that can be incorporated into your report.



**Create Report button**