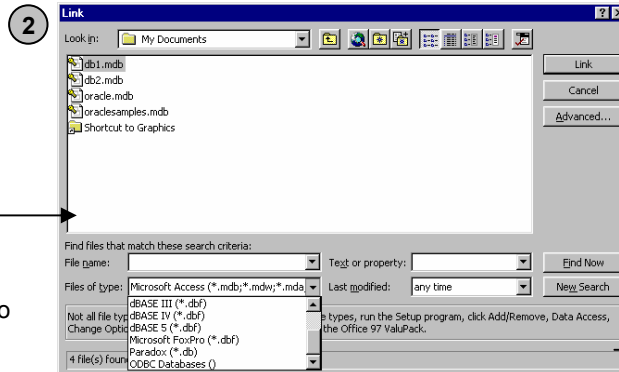
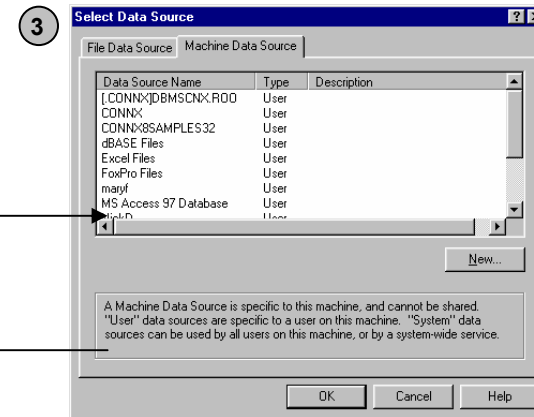


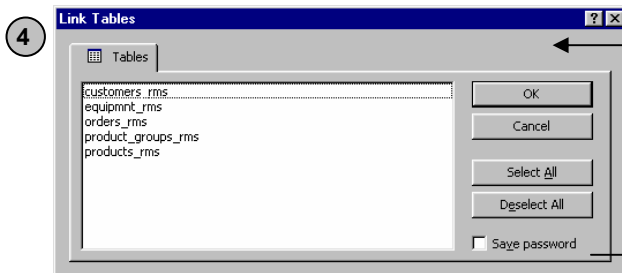
1 Create a blank Access database. Under **File** on the menu bar, point to **Get External Data**, and then click **Import** or **Link Tables**.



2 Specify that you are looking for an ODBC data source in the **Files of Type** list box in the **Access Link** or **Import** window.



3 Select the **Machine** or **File** DSN that you created for the CONNX CDD, and then click **OK**. You will be prompted to supply login information for CONNX.

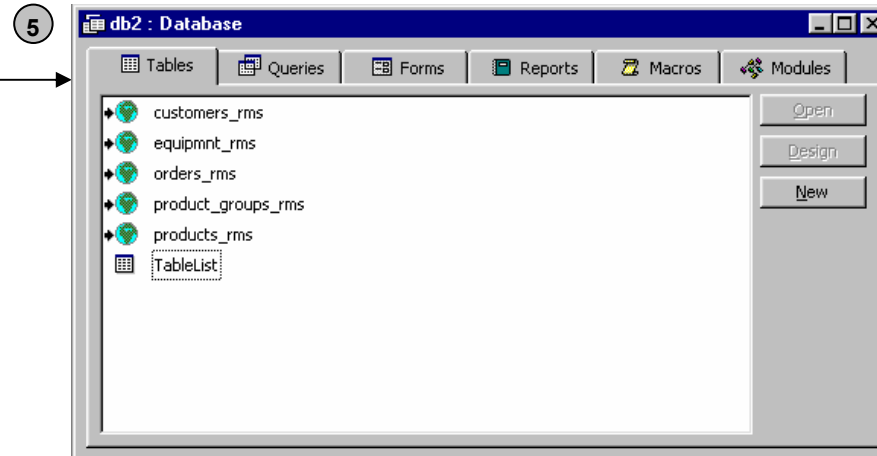


4 Log in, and then select tables in the CDD from within the **Link Tables** or **Import Objects** dialog box.

NOTE:

If you selected the **Import** option, a copy of the tables in your .mdb Access file has been created. Be aware that any modifications done to the .mdb file are not saved in the original database, only in the Access database. It is important to note that when you import the entire table, it is copied to your Access database.

If you selected the **Link Tables** option, you are now connected in real time to the source database. Any modifications performed on linked tables, denoted by a green globe icon, are also performed on the tables in your original database.



5 A green globe icon appears next to linked database tables in the Access database window.