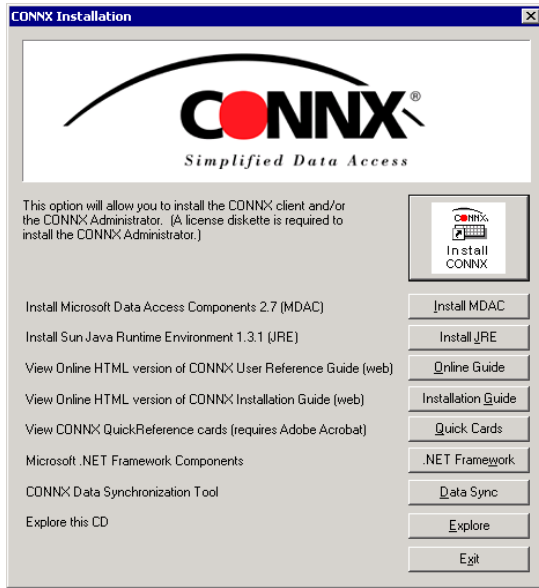


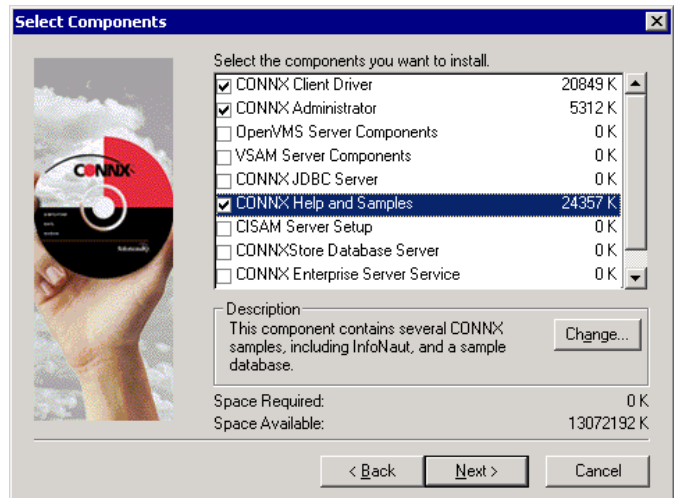
Installing and Importing PostgreSQL Databases for use with CONNX for PostgreSQL

If you've been wondering how to install CONNX for PostgreSQL and to import a PostgreSQL database, here's how:

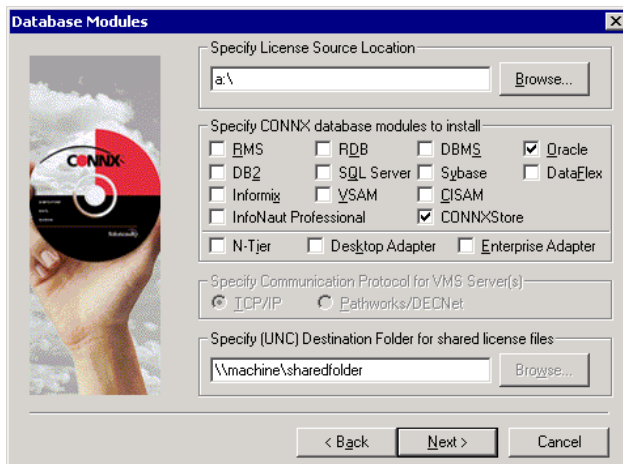
1. To install CONNX, run the CONNX CD-ROM or download the executable file. In the CONNX window, click the Install CONNX button.



2. Accept the CONNX license agreement and the default settings for file location. In the Select Components dialog box, select the CONNX Client Driver, CONNX Administrator and the CONNX Help File and Samples, and then click the Next button.



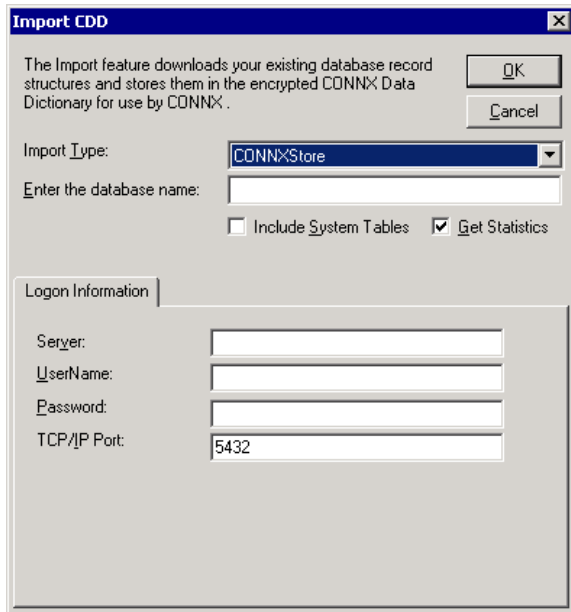
3. In the Database Modules dialog box, specify a license source location, and then select CONNXStore as the database module to install. Under Specify (UNC) Destination Folder for shared license files, enter the location on the network. Complete the installation as described in the CONNX Installation Guide, and then restart your machine.



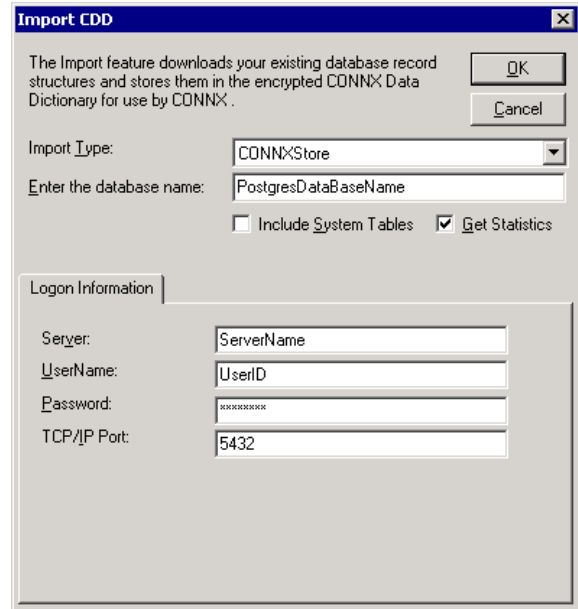
4. To import a PostgreSQL database into the CONNX Data Dictionary, click Start, point to Programs, point to CONNX x, then select CONNX Data Dictionary. The CONNX Data Dictionary Manager window appears. In the Open dialog box, click Cancel. In the CONNX Data Dictionary Manager window, click the Import button.



- 5. The Import CDD dialog box appears. Verify that the Import Type is CONNXStore.



- 6. Enter a PostgreSQL database name. Enter a server name. This could be the name or IP address of the server where the PostgreSQL database resides. Enter a user name and a password for the server. Under TCP/IP Port, the default value is 5432. If there is a firewall in place, or any other change needs to be made, enter the new port number, and then click the OK button.



- 7. CONNX locates your PostgreSQL database and presents you with a list of tables for import. Select the tables, and then save the CDD.

©CONNX Solutions, Inc., 2007. All rights reserved.

Portions of the PostgreSQL Data Base Management System are copyrighted © 1996-2002, PostgreSQL Global Development Group
Portions Copyright © 1994-7 Regents of the University of California

Permission to use, copy, modify, and distribute this software and its documentation for any purpose, without fee, and without a written agreement is hereby granted, provided that the above copyright notice and this paragraph and the following two paragraphs appear in all copies.

IN NO EVENT SHALL THE UNIVERSITY OF CALIFORNIA BE LIABLE TO ANY PARTY FOR DIRECT, INDIRECT, SPECIAL, INCIDENTAL, OR CONSEQUENTIAL DAMAGES, INCLUDING LOST PROFITS, ARISING OUT OF THE USE OF THIS SOFTWARE AND ITS DOCUMENTATION, EVEN IF THE UNIVERSITY OF CALIFORNIA HAS BEEN ADVISED OF THE POSSIBILITY OF SUCH DAMAGE. THE UNIVERSITY OF CALIFORNIA SPECIFICALLY DISCLAIMS ANY WARRANTIES, INCLUDING, BUT NOT LIMITED TO, THE IMPLIED WARRANTIES OF MERCHANTABILITY AND FITNESS FOR A PARTICULAR PURPOSE. THE SOFTWARE PROVIDED HEREUNDER IS ON AN "AS IS" BASIS, AND THE UNIVERSITY OF CALIFORNIA HAS NO OBLIGATIONS TO PROVIDE MAINTENANCE, SUPPORT, UPDATES, ENHANCEMENTS, OR MODIFICATIONS.