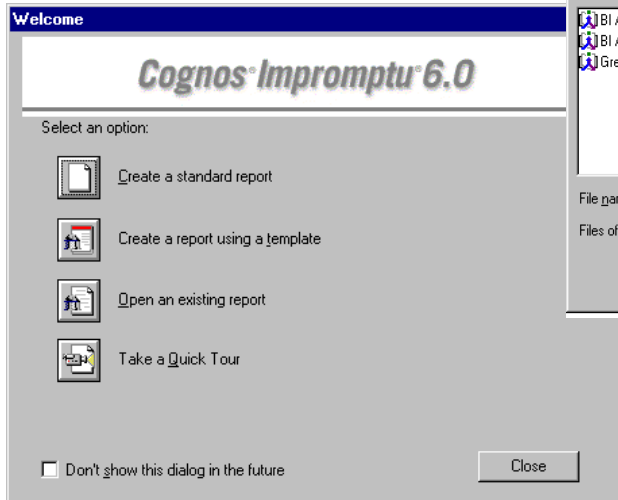
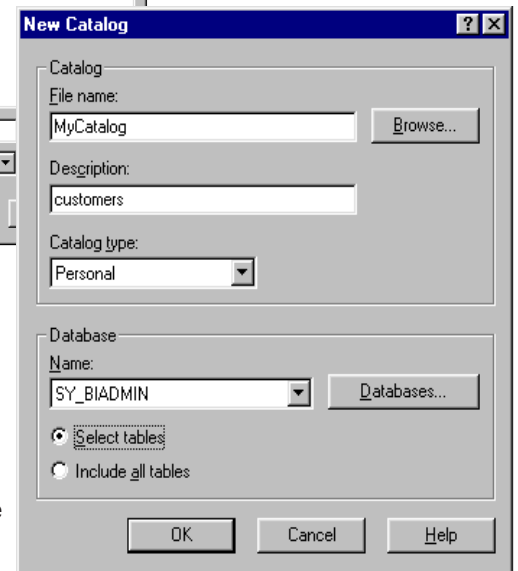
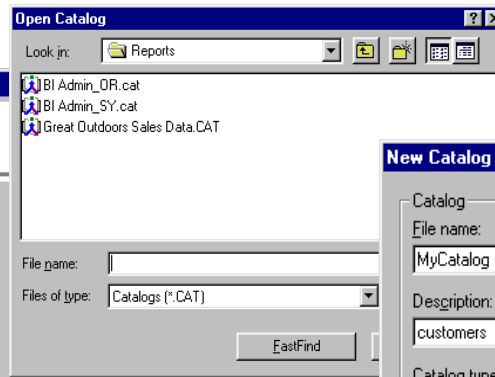


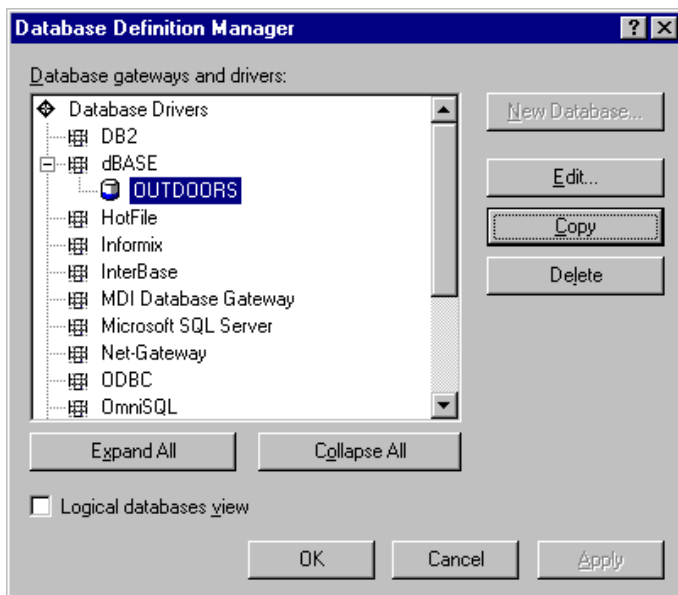
1. Select **Start**, point to **Cognos**, and then select **Impromptu Administrator**. Click **Create a Standard Report**.



2. Click the **Cancel** button in the Open Catalog window.

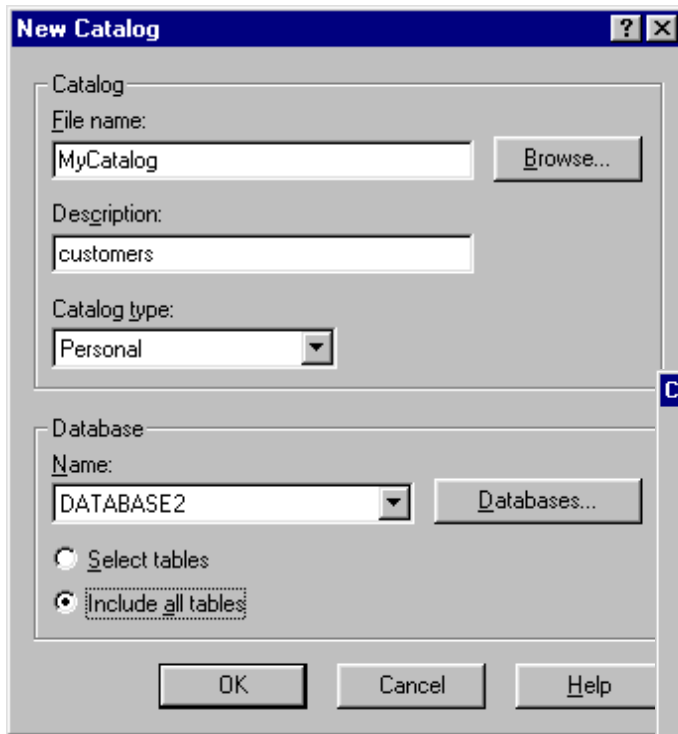


3. Select the **Catalog** menu, and then click **New**. The **New Catalog** dialog box appears. Type a file name and description for the new catalog, and then click the **Database** button.

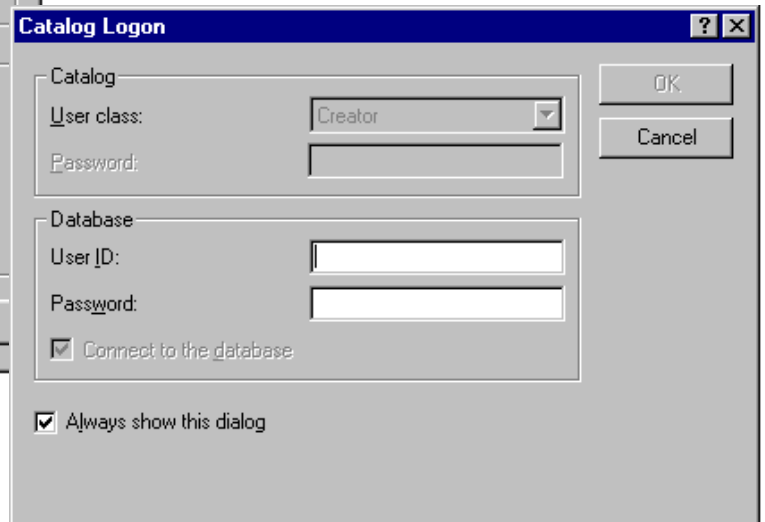


4. The **Database Definition Manager** dialog box appears. Select **ODBC Gateway** from the **list of database gateways and drivers**. The new database is added to the **Databases** dialog box. Click the **OK** button, and then click the **New Database** button.
5. Type a name for the logical database in the Logical Database Name text box. Select an ODBC data source in the ODBC Data Source list box. Click the OK button.

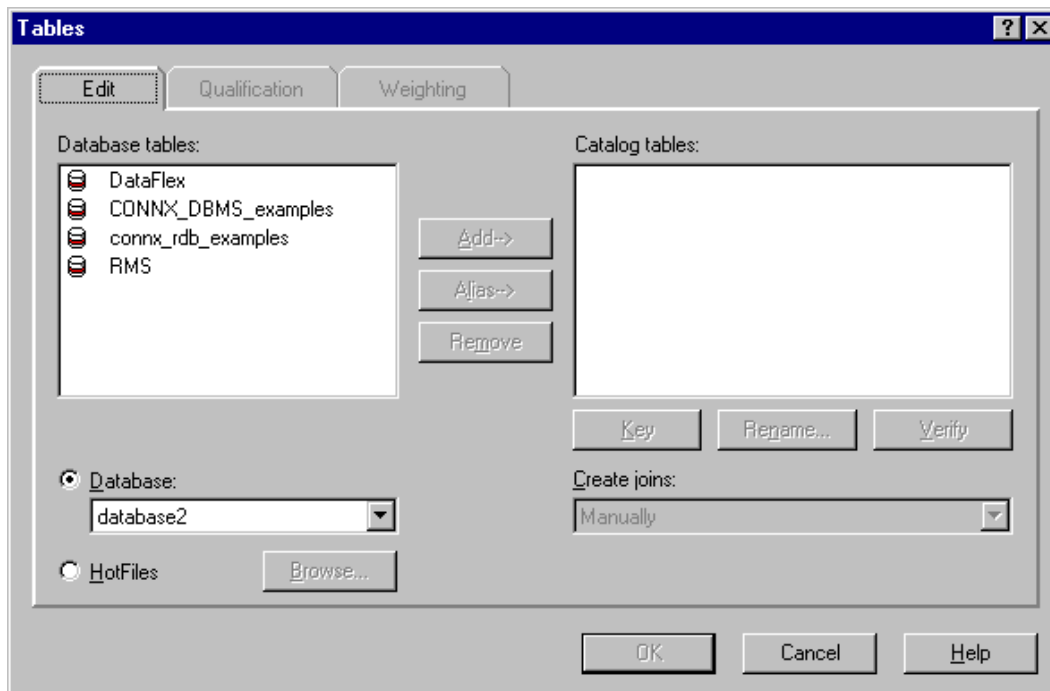
If you receive a prompt for user ID and password, enter your CONNX user ID and password, or return to the Database Definition Manager window and enter an ODBC connect string, and then click the OK button.



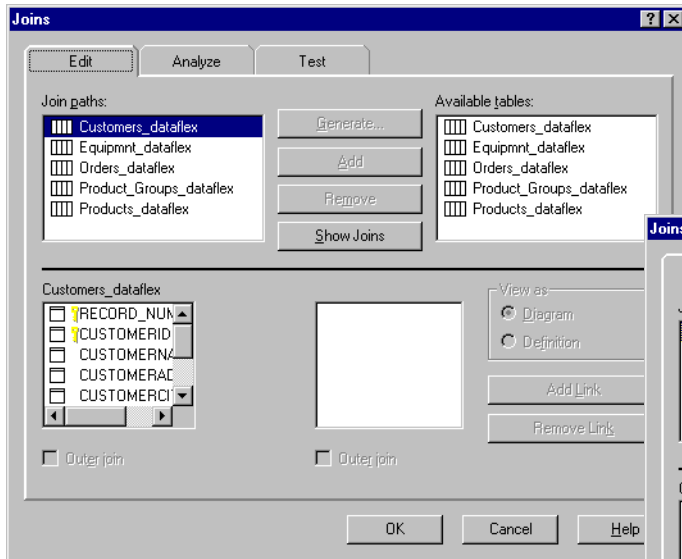
6. Click the OK button in the Database Definition Manager window. The **New Catalog** dialog box appears with the new database listed in the **Database Name** text box. Click the **OK** button.



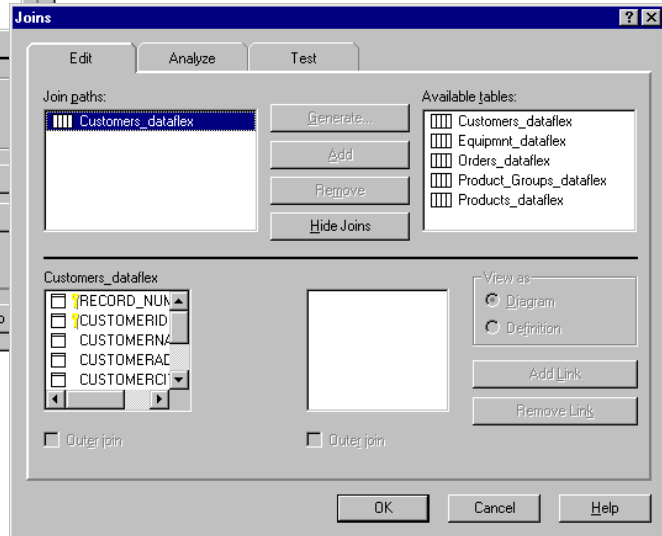
7. The **Catalog Logon** dialog box appears. Type your CONNX user name and password. Click the **OK** button.



8. The **Tables** dialog box appears. Select one of the available tables in the database, and then click the **Add** button. The table is added to the database in the Catalog Tables text box. Click the OK button.



9. The **Joins** dialog box appears. Select an available table, and then click the **Add** button to add the table to the list of tables available for joins. Click the **Show Joins** button to view current joins. Click the **OK** button to close the **Joins** window.



10. To continue adding tables, on the Catalog menu, click **Tables**. The **Tables** dialog box appears. Select available tables to add to your catalogs, and then click the **OK** button.

Troubleshooting note: Copy and paste the following section into the end of the COGDMOD.INI file to resolve error message [Exceptions Joins DRIVER:CONNX32.DLL]. This data is available at www.connx.com as a text file.

```

Cross=F
Cross_Syntax=""
Full_Non_Equi_Join=F
Full_Outer=F
Full_Post=""
Full_Pre=""
Full_Syntax=""
Inner=T
Inner_Col_Post=""
Inner_Col_Pre=""
Inner_Syntax=""
Inner_Tbl_Restrict=F
Left_Eql=" LEFT OUTER JOIN "
Left_Nested=T
Left_Outer=T
Left_Post=" } "
Left_Pre=" {oj "
Natural=F
Natural_Syntax=""
Nested_Outer=T
Non_Equi_Joins=F
One_Outer=F
On_Condition_Between_Predicate=F
On_Condition_In_Predicate=F
On_Condition_IsNull_Predicate=F
On_Condition_Like_Predicate=F
  
```

```

On_Condition_Not_Predicate=F
On_Condition_Set_Functions=F
On_Condition_Subqueries=F
Optnl_Tbl_Filter=F
Optnl_Tbl_Join_Filter=F
Optnl_Tbl_Join_Restrict=F
Outer_Tbl_List=F
Optnl_Tbl_Restrict=T
Outer_Syntax=T
Right_Eql=" RIGHT OUTER JOIN "
Right_Nested=T
Right_Outer=T
Right_Post=" } "
Right_Pre=" {oj "
Two_Sided_Join_Restrict=F
Union_Join=F
Union_Syntax=""
  
```

[Exceptions Delimiters DRIVER:CONNX32]

```

Catalog_Delimiter=""
Schema_Delimiter=""
Table_Delimiter=""
Column_Delimiter=""
Procedure_Delimiter=""
Wholename_Delimiter=""
  
```