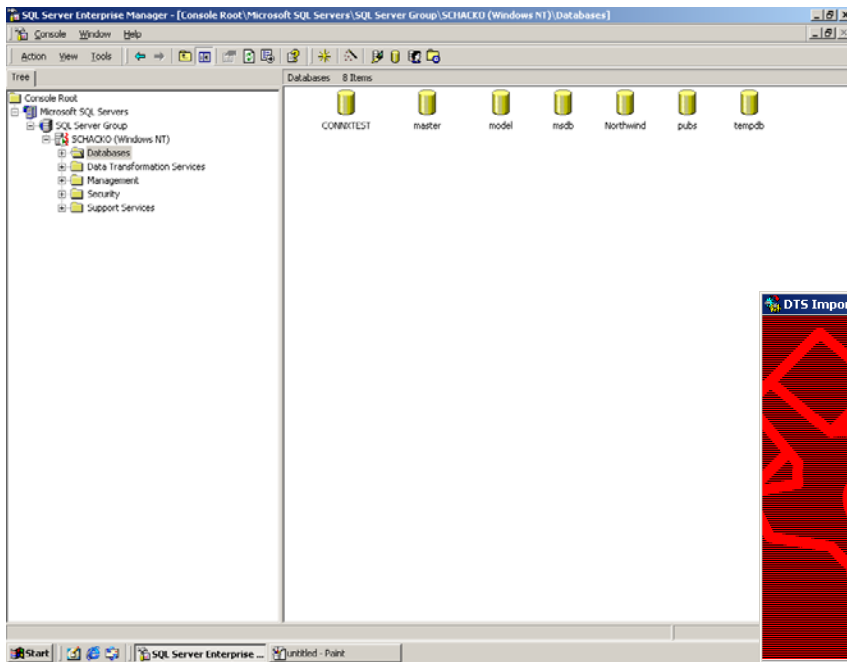


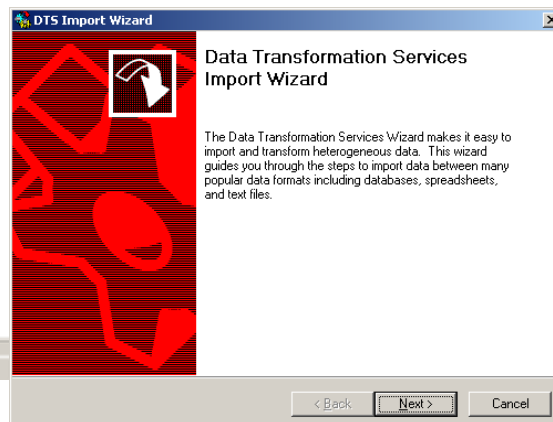
QUICK REFERENCE CARD

Using Microsoft SQL Server
Data Transformation Services
to Import from CONNX Data Sources

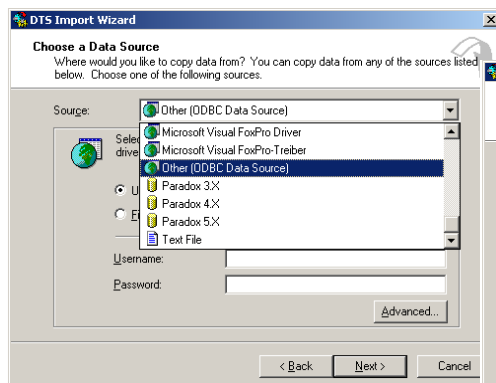
1. Open the **SQL Server Enterprise Manager**. Select a server under the **SQL Server Group**, and then right-click on either **Databases** or **Data Transformation Services**. Select **All Tasks**, and then select **Import Data**.



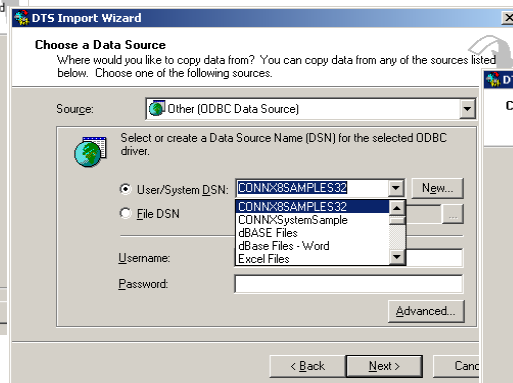
2. The **Data Transformation Services Import Wizard** appears. Click the **Next** button.



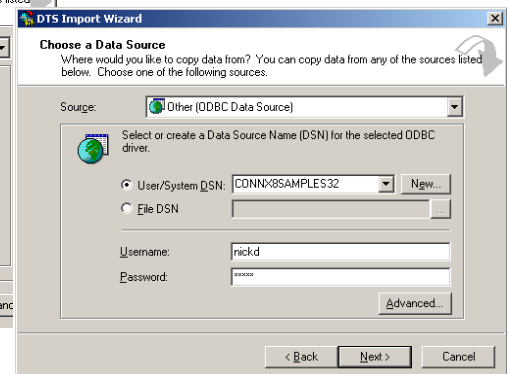
3. Under **Source** in the **Data Import Wizard**, select **Other (ODBC Data Source)** from the list box.



4. Select the appropriate CONNX DSN from the **User/System DSN** list box.

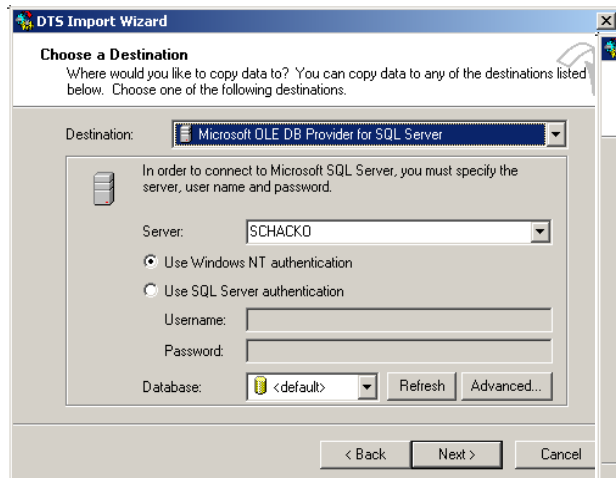


5. Type a CONNX user name and password, and then click the **Next** button.

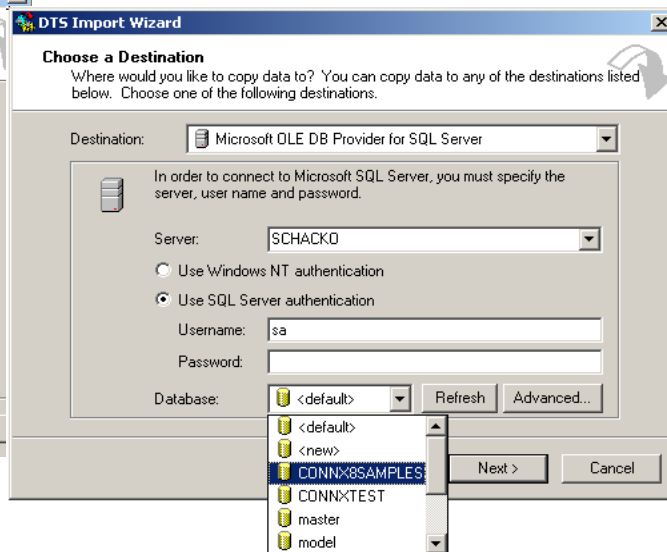


Tip: To use this utility with Microsoft Windows 95 or 98, install SQL Server 7.0 Service Pack 1.

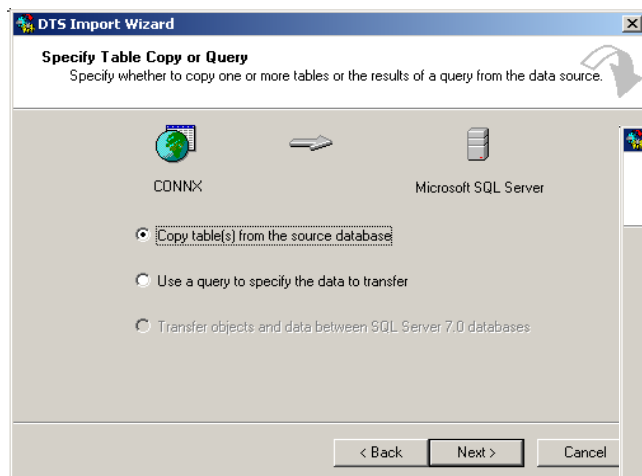
6. Select a destination for your imported tables, and then specify a server from the list in the **Enterprise Manager** window. Select **Windows NT** or **SQL Server** authentication, depending on your configuration of SQL Server.



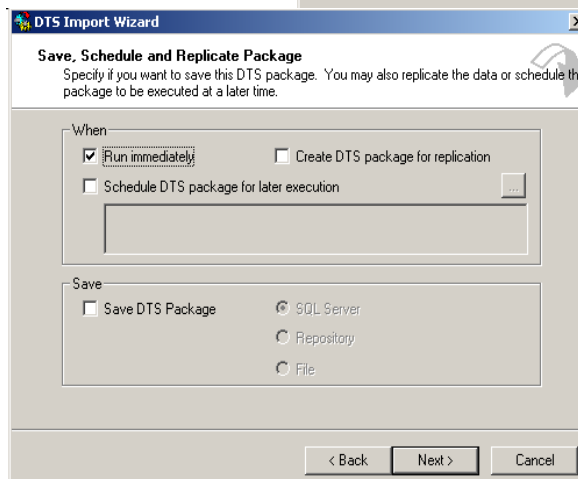
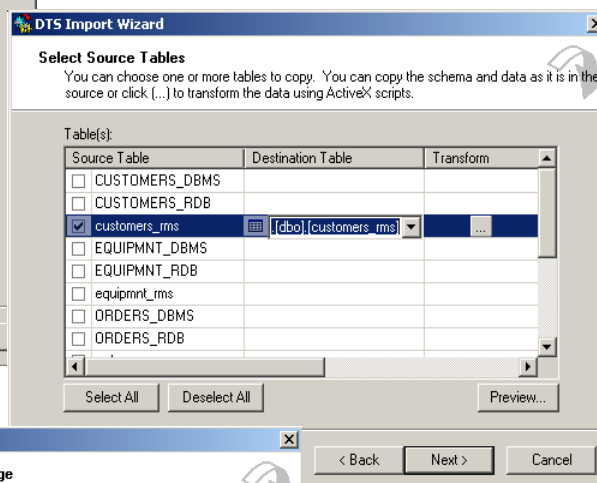
7. Select a database from the list box, and then click the **Next** button.



8. Select whether you want to copy all available tables or create a query to specify imported data. Click the **Next** button.



9. Select the tables you want to copy. Use the **Select All** button to copy all of the tables in the CONNX Data Dictionary. Click the **Preview** button to see a sample resultset. Click the **Next** button.



10. Select a run time for your database. You can save the DTS package and run it at a later time. Select the **Save DTS Package** check box and select a location to store the DTS Package (SQL Server, Repository, or File).

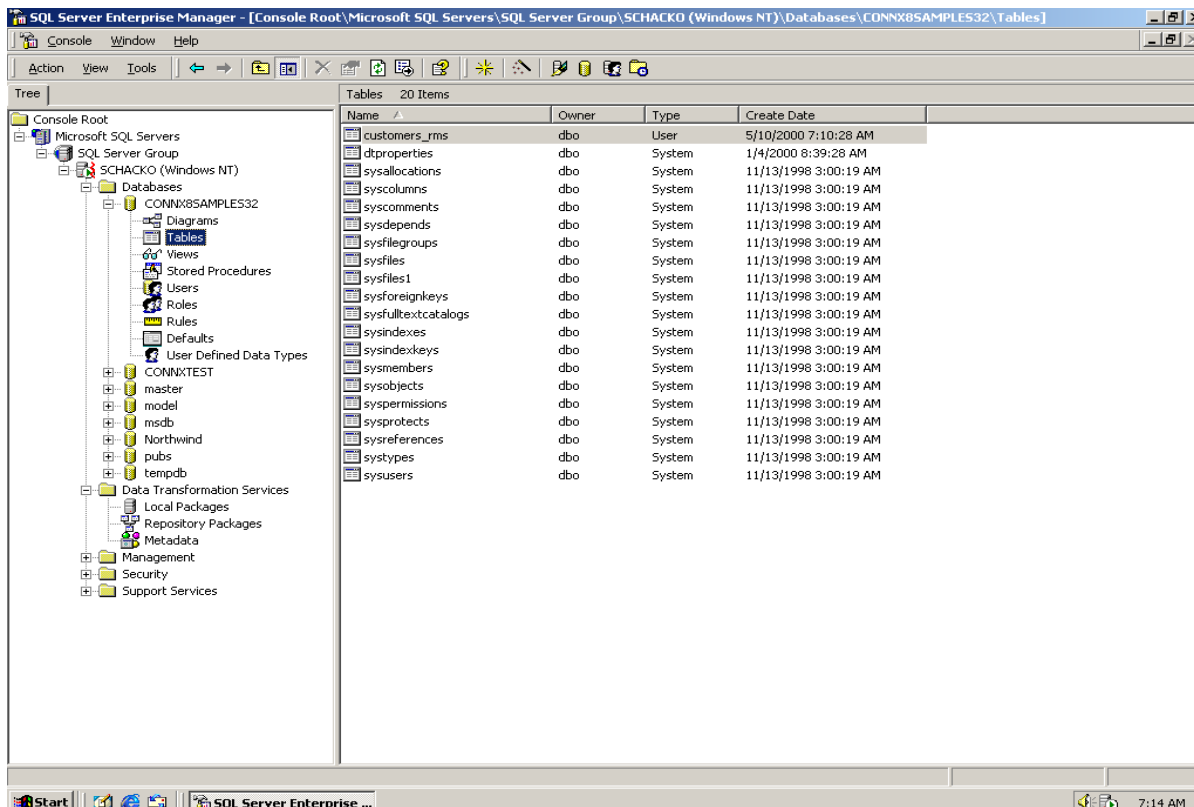
11. Click the **Finish** button.



12. Click the **OK** button.



13. The imported table appears in the table list of your SQL Server database.



Note: Indexing information does not appear in databases imported through Data Transformation Services. You will also have to enter keys manually in tables produced through the DTS wizard.